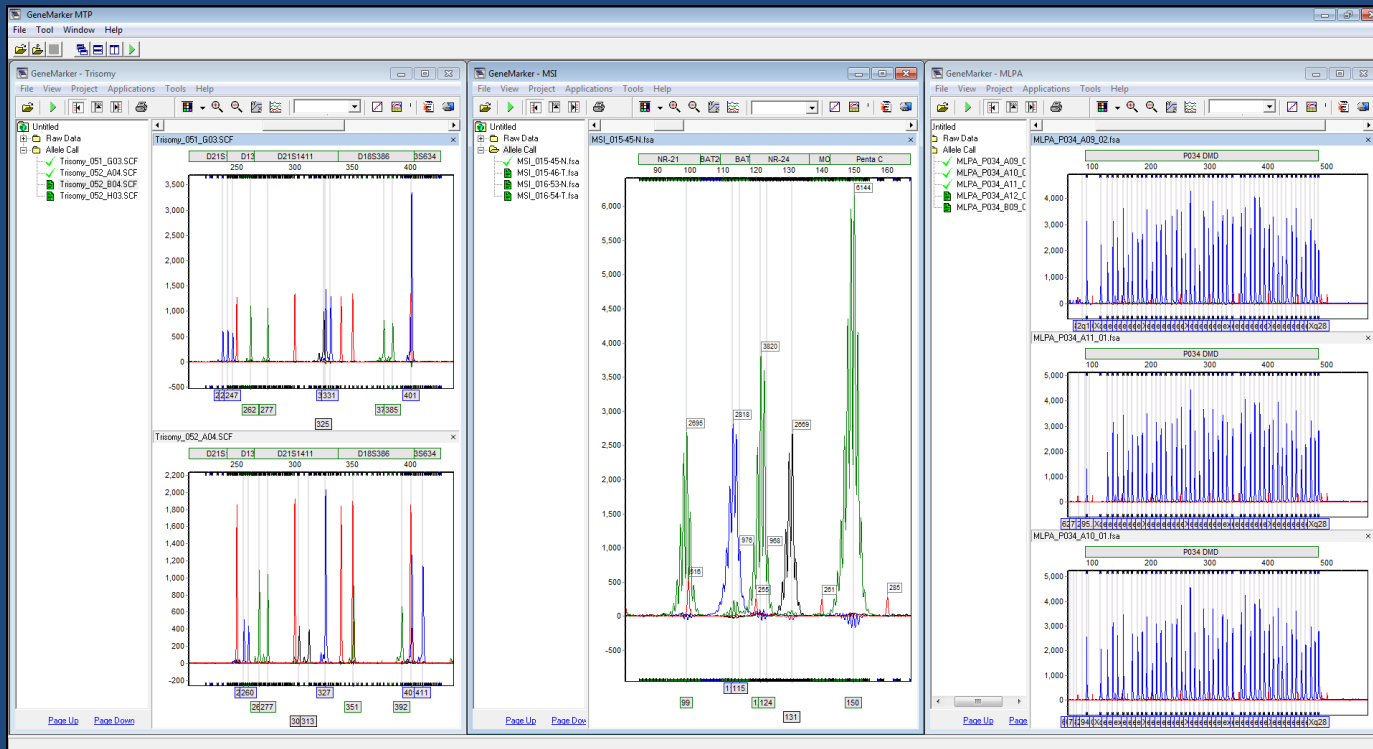


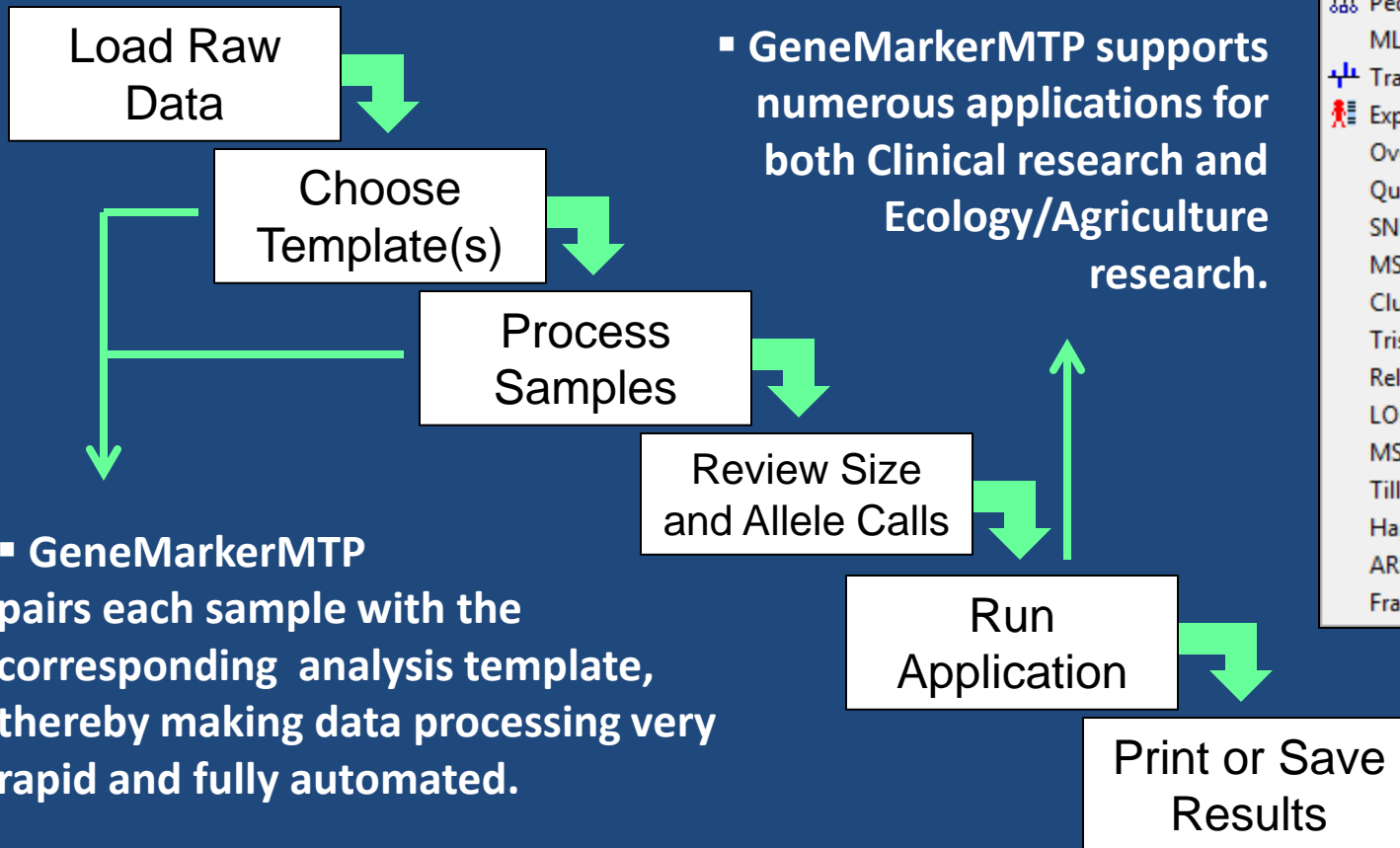
GeneMarker® MTP:

Reduce Costs While Increasing Throughput

- Analyze samples amplified with up to 6 different chemistries simultaneously.
- Analysis templates are automatically assigned to the corresponding samples.
- Linked navigation for reviewing results of multiple projects in the same screen.
- Easily make custom templates for different analysis types (Fragile X, Trisomy, MLPA®, AFLP, Microsatellite, MSI....).

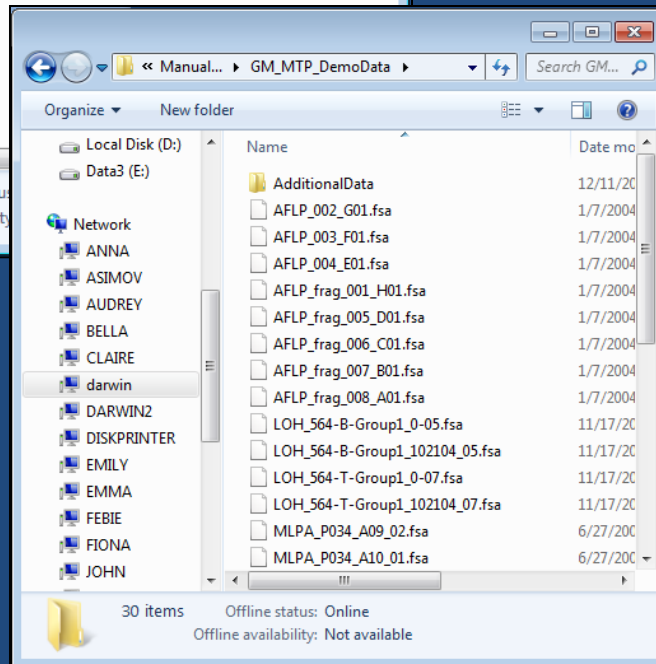
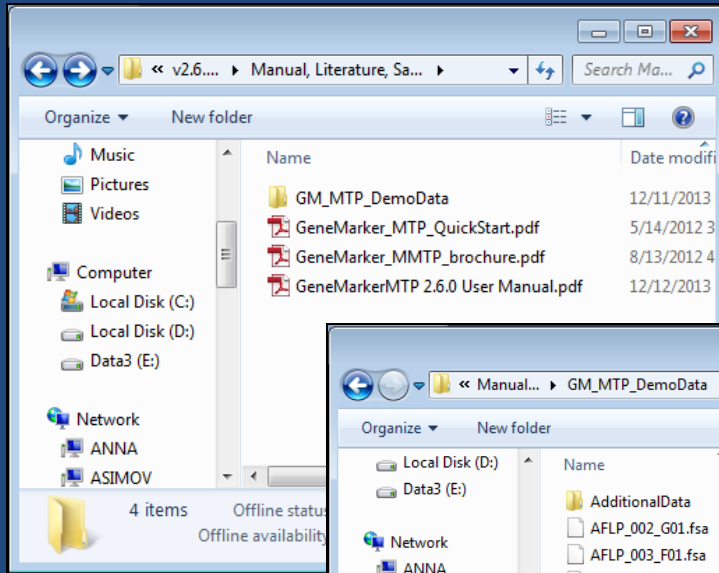


GeneMarkerMTP Workflow:

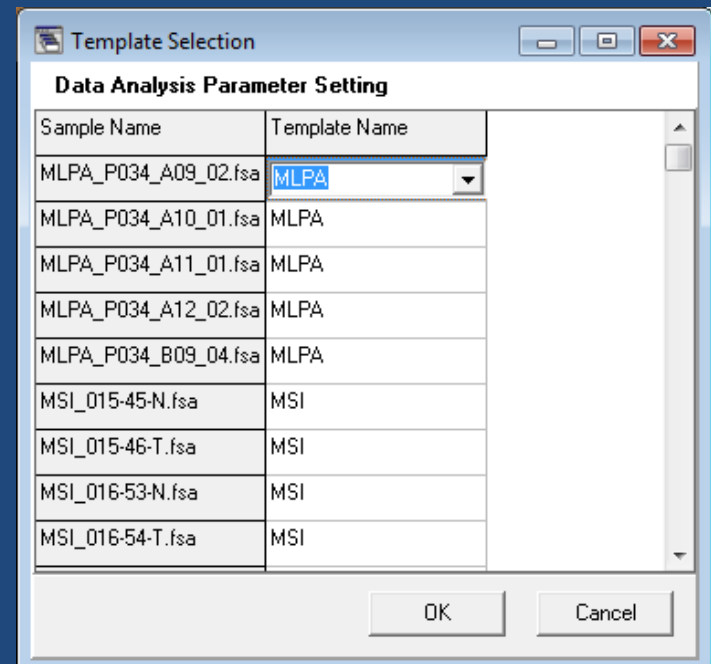


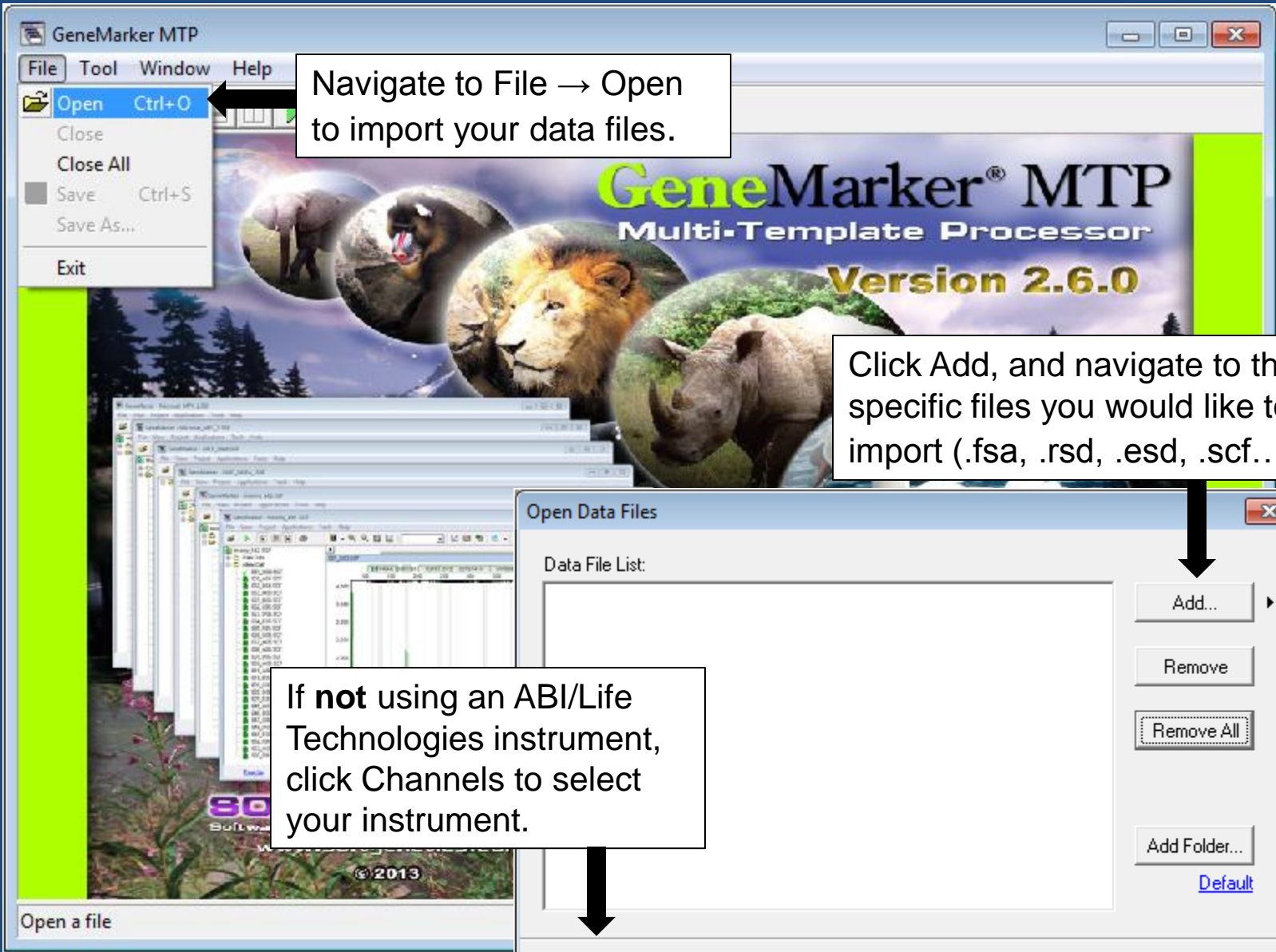
How to Use This Guide

- The GeneMarkerMTP disc is preloaded with several sets of sample data. You are encouraged to try a few initial runs with these samples to aid in learning the basic operation of the program.



- Preloaded analysis templates are available for each data set. While following this guide, observe how multiple chemistries may be loaded simultaneously, and how GeneMarkerMTP correctly associates each sample with the correct template.
- See the next slides for more details

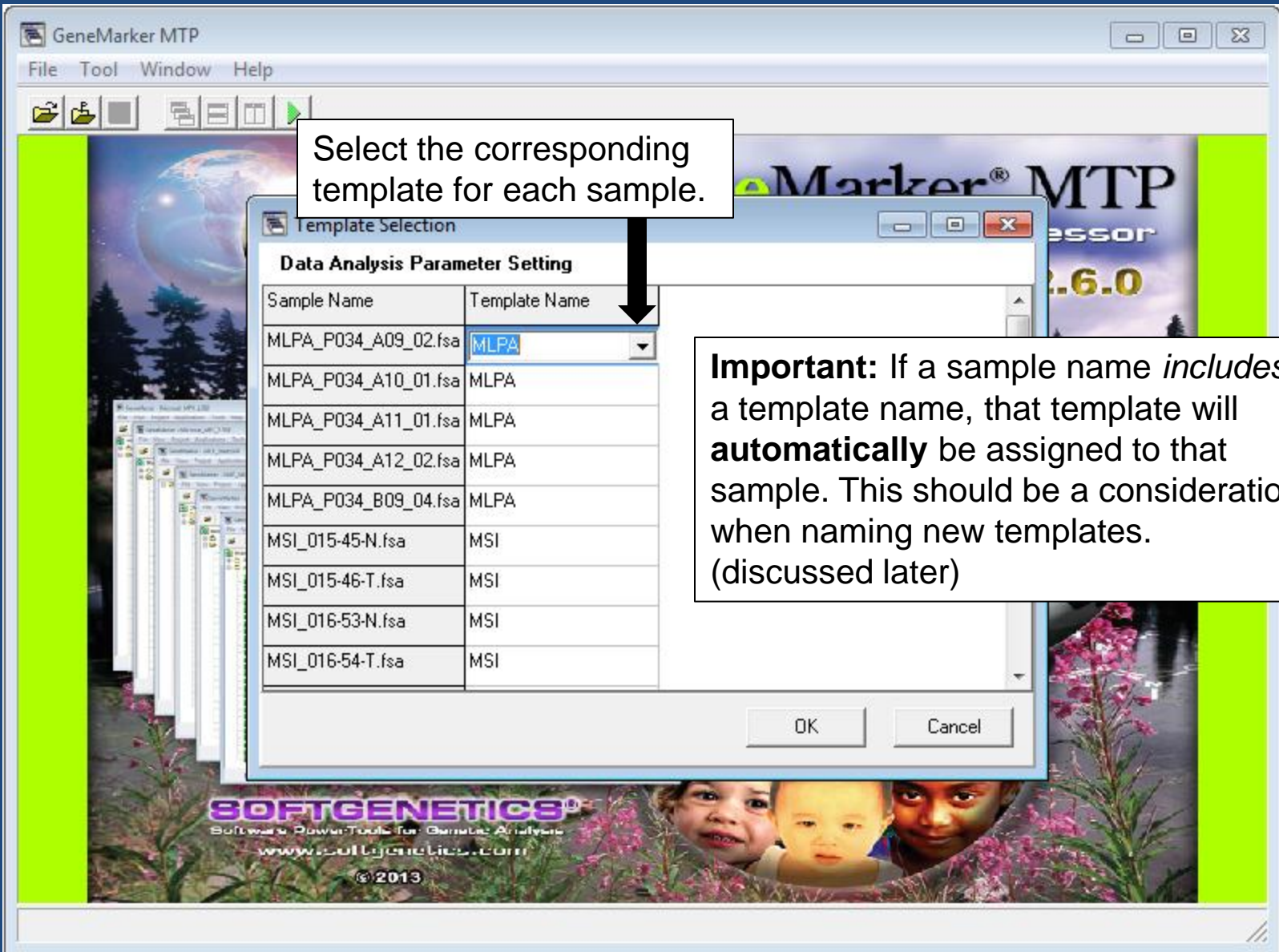




Navigate to File → Open to import your data files.

Click Add, and navigate to the specific files you would like to import (.fsa, .rsd, .esd, .scf...).

If not using an ABI/Life Technologies instrument, click Channels to select your instrument.



Use the navigation buttons to quickly arrange windows.

The screenshot displays the GeneMarker MTP software interface with several overlapping windows. The main window, titled "GeneMarker - MLPA", shows a file explorer on the left with a tree view containing "Raw Data" and "Allele Call" folders, and a list of "MLPA_P034" files. A menu is open over the "Applications" tab, listing various analysis options such as "Pedigree", "MLPA Analysis", "Trace Comparison", "Export CODIS", "Overlay View", "Quantitative Analysis", "SNIPlex/SNaPshot", "MSI Analysis", "Clustering Analysis", "Trisomy Analysis", "Relationship Testing", "LOH Analysis", "MS-MLPA Analysis", "Tilling Analysis", "Haplotype Analysis", "ARMS/Comparative Analysis", and "Fragile X Analysis". The main plot area shows a chromatogram with a scale from -1,000 to 1,500 on the y-axis and a marker scale from 100 to 500 on the x-axis. A table titled "Report" and "Bin" is visible on the right side of the window.

Processed samples will be organized into projects based on their Analysis Template.

Review the processed data, proceed to a post-genotyping application, and/or export the results.

	P034 DMD	P034 DMD	P034 DMD	P034 DMD	P03
	2q14	ChrY	Xq11.2	ex01	ex4
1	MLPA_P034_A09_0_1	1\$21098	1\$14503	1\$10824	1\$21415 1\$1
2	MLPA_P034_A10_0_1	1\$16675	1\$13611	1\$13499	1\$20939 1\$1
3	MLPA_P034_A11_0_1	1\$8553	0\$0	1\$13187	1\$21367 1\$1
4	MLPA_P034_A12_0_1	1\$14852	1\$11477	0\$0	1\$20888 1\$1
5	MLPA_P034_B09_0_1	1\$31	0\$0	0\$0	0\$0

To save a project in its entirety, simply navigate to File → Save Project.

The screenshot displays the GeneMarker software interface. The 'File' menu is open, showing options like 'Open Data', 'Open Project', 'Reopen Project', 'Save Project', 'Close All', and 'Exit'. The 'Save Project' option is highlighted. In the background, a data plot for 'Trisomy_052_A04.SCF' is visible, showing a signal across a range of markers. A 'Report' window is also open, displaying a table of data.

		D21S1437		D21S11		D18S33
1	Trisomy_051_G03	115	127	238	242	327
2	Trisomy_052_A04	127	131	257	260	327
3	Trisomy_052_B04	127	131	257	260	327
4	Trisomy_052_H03	127	131	257	260	327

Later, the project may be reopened by clicking the Folder Icon with a P.

The GeneMarker MTP logo is displayed, featuring a collage of animals including a lion, a rhinoceros, a gorilla, and a swan, set against a background of a globe and a forest.

Creating specialized templates is an important aspect of GeneMarker MTP. To create a new template, navigate to Tool → Template Settings.

GeneMarker MTP
Multi-Template Processor
Version 2.6.0

Template Setting

Template Name List

- AFLP
- LOH
- MSI
- MS-MLPA
- MLPA
- Trisomy
- Microsatellite_Animal
- Microsatellite_Plant
- SNaPshot
- FragileX
- mPCR
- New Example**

Template Section | Data Process | Additional Settings

Template Selection
Set the template of the project

Template Name:

Panel:

Size Standard:

Standard Color:

Analysis Type:



Give the Template a name, and then select the Panel, Size Standard, Standard Color, and Analysis Type.

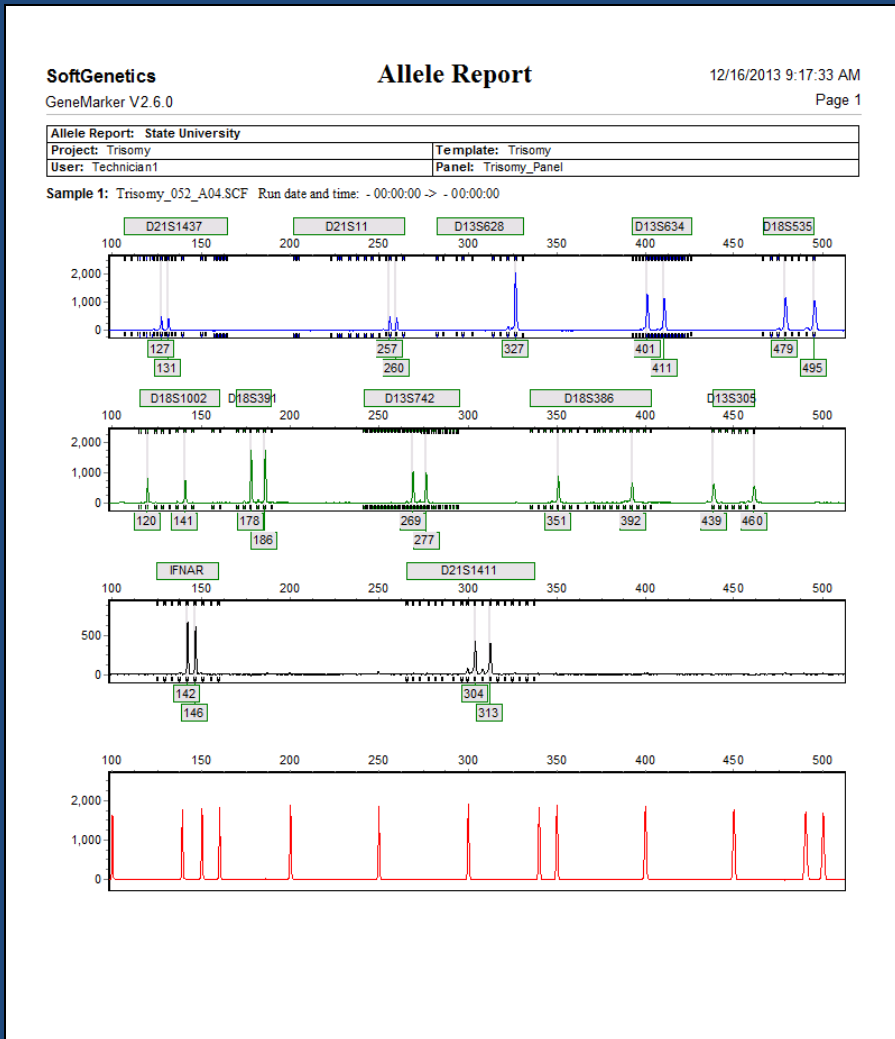
After making your selections click Save.

This is only the first page of settings; click next to navigate to the other two.

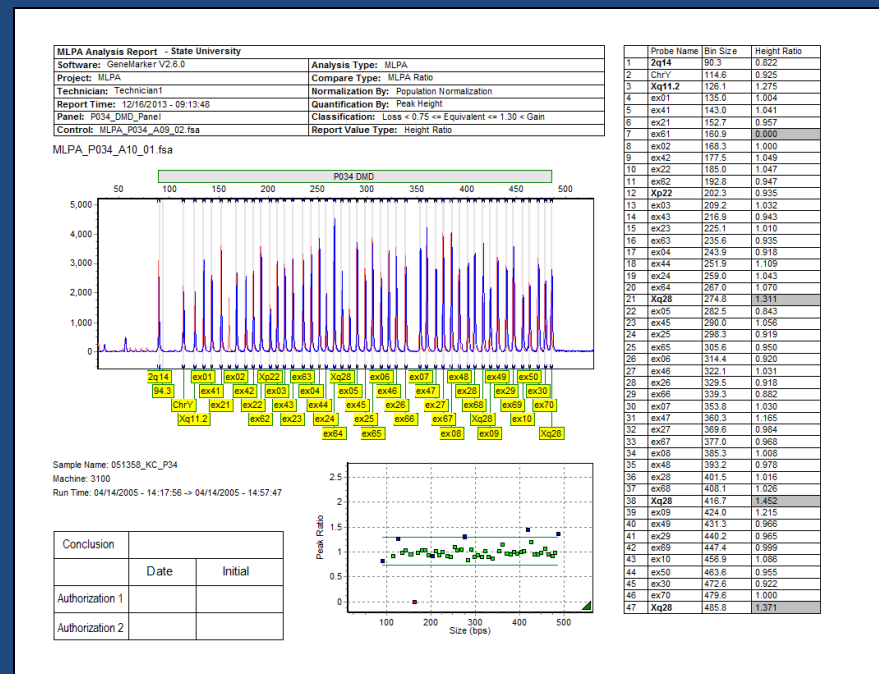
Delete Save << Back Next >> Ok Cancel

GeneMarkerMTP Supports Numerous Reporting Options

- In the main analysis window, or in a specific application (Trisomy, MLPA, etc) simply use the printer icon:  to preview a print report. These reports can be extensively customized, and may be printed directly or saved digitally using the save icon: 



A typical print report from one of the many post-genotyping applications (MLPA).



Need Assistance?

Please Email: tech_support@softgenetics.com

Or Please Call: 814-237-9340

Use the link below to view Webinars covering the basics of GeneMarkerMTP as well as advanced topics (Fragile X, MLPA, Trisomy, etc.):

<http://www.softgenetics.com/analysisCorner.html>

GeneMarker[®]MTP
Multi-Template Processor