



Genomic DNA from soil

User manual

NucleoSpin[®] 8 Soil

March 2018 / Rev. 01

Contact MN

Germany and international

MACHEREY-NAGEL GmbH & Co. KG

Neumann-Neander-Str. 6–8 · 52355 Düren · Germany

Tel.: +49 24 21 969-0

Toll-free: 0800 26 16 000 (Germany only)

Fax: +49 24 21 969-199

E-mail: info@mn-net.com

Technical Support Bioanalysis

Tel.: +49 24 21 969-270

E-mail: tech-bio@mn-net.com

USA

MACHEREY-NAGEL Inc.

2850 Emrick Blvd. · Bethlehem, PA 18020 · USA

Tel.: +1 484 821 0984

Toll-free: 888 321 6224 (MACH)

Fax: +1 484 821 1272

E-mail: sales-us@mn-net.com

France

MACHEREY-NAGEL SARL à associé unique

1, rue Gutenberg · 67722 Hoerdt · France

Tel.: +33 388 68 22 68

Fax: +33 388 51 76 88

E-mail: sales-fr@mn-net.com

Switzerland

MACHEREY-NAGEL AG

Hirsackerstr. 7 · 4702 Oensingen · Switzerland

Tel.: +41 62 388 55 00

Fax: +41 62 388 55 05

E-mail: sales-ch@mn-net.com

www.mn-net.com

Table of contents

1 Components	4
1.1 Kit content	4
1.2 Reagents, consumables, and equipment to be supplied by user	5
1.3 About this user manual	5
2 Product description	6
2.1 The basic principle	6
2.2 Kit specifications	6
2.3 Required hardware	7
2.4 Automated processing on robotic platforms	8
2.5 Relevance of humic substances as PCR inhibitors	8
2.6 Amount of starting material	9
2.7 Choice of lysis buffer	9
2.8 Mechanical sample lysis	10
2.9 Repeated extraction	11
2.10 How to interpret DNA yield and purity from UV-VIS	11
3 Storage conditions and preparation of working solutions	14
4 Safety instructions	15
5 Protocols	17
5.1 NucleoSpin® 8 Soil – vacuum processing	17
5.2 NucleoSpin® 8 Soil – centrifuge processing	24
6 Appendix	29
6.1 Troubleshooting	29
6.2 Ordering information	30
6.3 Product use restriction / warranty	32

1 Components

1.1 Kit content

NucleoSpin® 8 Soil	
REF	12 x 8 preps 740779
Lysis Buffer SL1	150 mL
Lysis Buffer SL2	150 mL
Lysis Buffer SL3	50 mL
Enhancer SX	50 mL
Binding Buffer SB	250 mL
Wash Buffer SW1	125 mL
Wash Buffer SW2 (Concentrate) ¹	100 mL
Elution Buffer SE ²	60 mL
NucleoSpin® Bead Tubes Type A	12 x 8
NucleoSpin® Inhibitor Removal Strips (light gray rings)	12
NucleoSpin® Soil Binding Strips (light green rings)	12
MN Wash Plate ³	2
MN Square-well Block	2
Rack of Tube Strips ⁴	2
Cap Strips	12
User manual	1

¹ For preparation of working solutions and storage conditions see section 3.

² Composition of Elution Buffer SE: 5 mM Tris/HCl, pH 8.5.

³ For use with vacuum only.

⁴ Set of 1 rack, 12 strips with 8 tubes each, Cap Strips included

1.2 Reagents, consumables, and equipment to be supplied by user

Reagents

- 96–100 % ethanol

For more detailed information regarding special hardware required for centrifuge or vacuum processing, see section 5 or contact Technical Service (tech-bio@mn-net.com).

1.3 About this user manual

It is strongly recommended that first time users of the **NucleoSpin® 8 Soil** kit read the detailed protocol sections of this user manual. Experienced users, however, may refer to the Protocol at a glance instead. The Protocol at a glance is designed to be used only as a supplemental tool for quick referencing while performing the purification procedure.

All technical literature is available on the internet at www.mn-net.com.

Please contact Technical Service regarding information about changes of the current user manual compared to previous revisions.

2 Product description

2.1 The basic principle

The sample material is resuspended in Lysis Buffer SL1 or SL2, supplemented with the Enhancer SX, and mechanically disrupted using ceramic beads.

Proteins and PCR inhibitors are precipitated with Lysis Buffer SL3 and subsequently pelleted by centrifugation together with the ceramic beads and undissolved sample material. The supernatant is taken off and cleared by passing it through a NucleoSpin® Inhibitor Removal Strip.

DNA binding conditions are then adjusted by addition of Binding Buffer SB to the flowthrough and the lysate is loaded onto a NucleoSpin® Soil Binding Strip.

Residual humic substances, especially humic acids and other PCR inhibitors, are removed by efficient washing with Binding Buffer SB and Wash Buffers SW1 / SW2. After a drying step, ready to use DNA can be eluted with Elution Buffer SE (5 mM Tris/HCl, pH 8.5).

2.2 Kit specifications

- The **NucleoSpin® 8 Soil** kit is designed for the isolation of high molecular weight genomic DNA from microorganisms like Gram-positive and Gram-negative bacteria, archaea, fungi, and algae in soil, sludge, and sediment samples.
- Suitable for soils from forest, bog, farmland, grassland, etc.
- Suitable for stool samples.
- The kit offers two special lysis buffers, **Buffer SL1** and **Buffer SL2**, which can be combined with the chemical additive **Enhancer SX** to guarantee highest possible yields with excellent purity for all types of sample material.
- Efficient mechanical lysis of the sample material is achieved by bead beating using the ceramic **NucleoSpin® Bead Tubes Type A**.
- The optimized buffer chemistry and the **NucleoSpin® Inhibitor Removal Strips** completely remove humic substances and other PCR inhibitors typically present in soil and sediment samples.
- The eluted DNA is ready to use for all standard downstream applications. In most cases the concentrated DNA can be used as PCR template without further dilution for highest sensitivity.

The kit can be processed with vacuum or centrifugation, manually or semi automated.

Table 1: Kit specifications at a glance

Parameter	NucleoSpin® 8 Soil
Technology	Silica membrane technology
Format	8-well strips
Processing	Manual or automated, vacuum or centrifugation
Sample material	< 500 mg soil or sediment
Typical yield	2–10 µg
Elution volume	100–200 µL
Preparation time	150 min/6 strips
Binding capacity	50 µg

2.3 Required hardware

NucleoSpin® 8 Soil can be processed under vacuum or with centrifugation. Certain hardware for processing is required.

Centrifugation

For processing the 8-well strips under centrifugation, the Starter Set C (see ordering information, section 6.2 containing Column Holders C, NucleoSpin® Dummy Strips, MN Square-well Blocks, and Rack of Tube Strips) is required.

For centrifugation with Column Holder C (with inserted NucleoSpin® Soil Binding Strips) stacked on a MN Square-well Block or Rack of Tube Strips, a microtiter plate centrifuge is required. It should be able to accommodate the above mentioned sandwich and reach accelerations of 5,600–6,000 x *g* is required (bucket height: 85 mm).

Regarding waste collection, suitable consumables (e.g., MN Square-well Blocks) are necessary and they are not included in the kit. For the most convenient handling, without the need of emptying and reusing the MN Square-well Blocks, we recommend using six MN Square-well Blocks if two Column Holders C are processed at once (see ordering information, section 6.2). Alternatively, it is possible to empty the MN Square-well Blocks after every centrifugation step, reducing the amount of MN Square-well Blocks needed.

Vacuum processing

For processing 8-well strips under vacuum, the Starter Set A (see ordering information, section 6.2), containing Column Holders A and NucleoSpin® Dummy Strips is required.

The use of NucleoSpin® Soil Inhibitor Removal Strips and Binding Strips in a Column Holder A allows the isolation of up to $n \times 8$ samples ($n = 1$ to 6). Insert as many NucleoSpin® Soil Strips as required into the reusable column holder. Seal unused wells of NucleoSpin® Soil Strips with Self-adhering PE-Foil and close unused wells with NucleoSpin® Dummy Strips. Place the Column Holder on the NucleoVac 96 manifold.

For **automation** on laboratory platforms with standard 96-well plate manifolds, the use of Starter Set A is also required.

The **NucleoSpin® 8 Soil** kit can be used **manually** with the NucleoVac 96 Vacuum Manifold (see ordering information, section 6.2).

Establish a reliable vacuum source for the NucleoVac 96 Vacuum Manifold. The manifold may be used with a vacuum pump, house vacuum, or water aspirator. We recommend a vacuum of -0.2 to -0.4 bar (reduction of atmospheric pressure). The use of the NucleoVac Vacuum Regulator (see ordering information, section 6.2) is recommended. Alternatively, adjust the vacuum so that during the purification the sample flows through the column with a rate of 1–2 drops per second. Depending on the amount of sample being used, the vacuum times may need to be increased for complete filtration.

Additionally, a suitable centrifuge for sample preparation steps may be required.

For general consumables and equipment needed, please see section 1.2.

2.4 Automated processing on robotic platforms

NucleoSpin® 8 Soil can be processed semi automated on many common laboratory workstations. The bead beating lysis still has to be processed manually but the DNA clean up can be automated using vacuum for loading, washing and elution. Please contact MN for scripts and general considerations on a specific robot.

The risk of cross-contamination is reduced by optimized vacuum settings, an improved shape of the NucleoSpin® Soil Binding Strip outlets, and application of the MN Wash Plate protecting the bottom and the binding plate outlets from lysate and wash buffer spray. The MN Frame (see ordering information) can be used to position the disposable MN Wash Plate inside the vacuum chamber.

Visit MN online at www.mn-net.com or contact your local MACHEREY-NAGEL distributor for technical support regarding hardware, software, setup instructions, and selection of the protocol.

2.5 Relevance of humic substances as PCR inhibitors

Humic substances are produced by bacteria, fungi, and protozoa in soil, sediments, and waters during the degradation of plant or other organic matter. They consist of very high molecular weight compounds with undefined structures. Building blocks are mainly heterocyclic aromatic compounds that are linked by ether or ethoxy groups and which carry hydroxyl-, methoxy-, carbonyl-, or carboxyl groups.

According to their solubility in water they are divided into humin, humic acids, and fulvic acids. The completely insoluble and black humin has an average molecular weight of around 300,000 g/mol. The dark brown to grey colored humic acids are slightly smaller. They carry a lot of hydroxyl and carboxyl groups and are therefore mainly soluble at neutral or alkaline pH. The only slightly yellow to light brown colored fulvic acids with an average molecular weight of 2,000 g/mol are soluble under alkaline as well as under acidic conditions.

Due to the high molecular weight and the mainly polyanionic nature of humic substances, most purification methods do not distinguish between these molecules and DNA. For the same reason they act as extremely potent PCR inhibitors. Even smallest amounts of humic substances can inhibit for example DNA polymerases or restriction enzymes and result in a complete failure of enzymatic downstream applications.

Frequently, the problem is circumvented by dilution of the isolated DNA prior to PCR analysis. However, this results in a significantly reduced sensitivity because low abundance DNA may be lost completely.

Thus, highest DNA yields with as little PCR inhibitor contaminations as possible are of utmost importance for any DNA analysis of soil samples.

2.6 Amount of starting material

NucleoSpin® 8 Soil is suitable for processing 250–500 mg of sample material. However, do not fill the NucleoSpin® Bead Tube higher than the 1 mL mark (including the ceramic beads) to ensure sufficient head space for an efficient mechanical disruption.

Usually a reduction of starting material also helps to improve the lysis efficiency and to increase the purity of the DNA.

Very dry material can soak up large volumes of lysis buffer. In this case, either reduce the amount of sample material or add additional lysis buffer up to the 1.5 mL mark of the NucleoSpin® Bead Tube.

If possible remove foreign material like leaves, stones, or twigs (e.g., by sieving) as well as excess of water (e.g., by discarding the supernatant after spinning down sediment samples).

2.7 Choice of lysis buffer

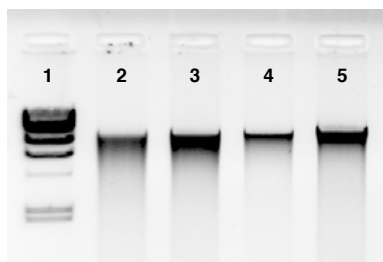
Due to the highly varying composition of different soils (organic matter, inorganic matter, humic substances, metal ions, polysaccharides, pH, etc.), it is impossible to obtain best results in DNA yield and purity for all sample types with only one single lysis buffer system.

There are several parameters that can be adjusted in a way that lysis works perfect for one sample but fails with another. Therefore, the NucleoSpin® 8 Soil kit is equipped with two lysis buffers SL1 and SL2 and Enhancer SX.

Those three components allow a perfect fine tuning for every type of soil sample for maximum yield and purity. Unfortunately, for the reasons given above there is no way to predict the best choice of lysis buffer for a specific sample. This can only be determined experimentally. Therefore, **both lysis buffers should be tested in parallel** for each new sample material.

After mixing the sample with lysis buffer in the NucleoSpin® Bead Tube, the Enhancer SX is added routinely to the sample prior to the mechanical homogenization. This buffer ensures the highest possible DNA yield with most sample materials. However, in case of a very high humic acid content in the sample material, the Enhancer SX might also reduce the purity of the DNA by facilitating the release of humic acids into the lysate. Therefore, the volume of added Enhancer SX can be lowered from 150 µL to for example 10 µL or the buffer can be entirely omitted. This usually increases the purity (A_{260}/A_{230}) of the sample significantly (Table 2), however, lower the DNA yield (Figure 1).

Ideally, for a new sample material both lysis buffers **Buffer SL1 and SL2** should be tested **with and without adding Enhancer SX**. These initial four preparations will help you to find the ideal lysis condition for your special soil composition.

**Figure 1**

Total DNA purified from wheat field soil with four different lysis buffer combinations
20 of 100 μ L eluate were analyzed on a 1% TAE agarose gel:

Lane 1: Marker λ /HindIII

Lane 2: Lysis Buffer SL1

Lane 3: Lysis Buffer SL1 + Enhancer SX

Lane 4: Lysis Buffer SL2

Lane 5: Lysis Buffer SL2 + Enhancer SX

Table 2: Yields and purity ratios of DNA purified from wheat field soil

Buffer	SL1		SL2	
Enhancer SX	-	+	-	+
Yield	2.3 μ g	2.3 μ g	1.4 μ g	3.1 μ g
A_{260}/A_{280}	1.69	1.60	1.76	1.72
A_{260}/A_{230}	1.85	0.96	1.78	0.99

2.8 Mechanical sample lysis

A thorough mechanical lysis step is essential to break up the soil crumbs, to free the cells within the soil, and to break up cells and spores. Ceramic beads have proven to be most effective in combination with a bead mill, a FastPrep[®]-24 instrument (MP Biomedicals, set instrument to 5 m/s for 30 s), or an adapter for Vortex-Genie[®] 2 (MN Bead Tube Holder, see ordering information, section 6.2). In most cases, however, this kind of equipment is not necessary. The same result can be achieved by taping the lysis tubes **horizontally** to a standard vortexer.

The lysis time should be as short as necessary to avoid shearing of DNA and to minimize the release of humic acids. Depending on the sample, however, it might be advantageous to increase the lysis time to 10, 20, or 30 min.

Homogenization and cell disruption should be performed at room temperature (18–25 °C) to avoid SDS precipitation in the lysis buffers. Overheating the sample, for example by prolonged bead beating in a bead mill or the FastPrep[®]-24 instrument, should be avoided to minimize liberation of humic acids.

2.9 Repeated extraction

For sample materials containing a high amount of microorganisms a single extraction step might not be sufficient to disrupt every cell and to release all DNA. Extracting the sample twice may help to increase DNA yield significantly.

Therefore, follow the protocol until the first centrifugation in step 4. But instead of adding Lysis Buffer SL3 directly to the NucleoSpin® Bead Tube, transfer the supernatant to a new collection tube (not provided) and complete step 4 with this supernatant. Then repeat steps 1–4 with the same soil sample in the NucleoSpin® Bead Tube. Filter both final supernatants of step 4 through a NucleoSpin® Inhibitor Removal Strip as described in step 5. Add Binding Buffer SB to both filtrates according to step 6 and finally load both samples on one NucleoSpin® Soil Binding Strip according to step 7 in multiple loading steps.

Note that the supplied buffer volumes are calculated for only one extraction per well. The excess of Enhancer SX and Binding Buffer SB might not be sufficient to allow two extraction steps.

2.10 How to interpret DNA yield and purity from UV-VIS

The most common method to determine the DNA yield is UV-VIS spectroscopy. The DNA concentration in the final eluate can be calculated from its absorption maximum at 260 nm (A_{260}) based on the fact that an absorption of $A_{260} = 1$ corresponds to 50 µg/mL double stranded DNA. However, this calculation assumes the absence of any other compound that absorbs UV light at 260 nm. Any contamination with, for example, RNA, protein, or especially humic substances significantly contributes to the total absorption at 260 nm and therefore leads to an overestimation of the real DNA concentration.

Figure 2 shows a typical UV absorbance spectrum of pure DNA (solid line) exhibiting a peak at 260 nm, a decrease of absorption with a minimum at 230 nm, and only a moderate increase in absorption below 230 nm. In comparison, the spectrum of a sample that is contaminated with humic acids demonstrates only a small shoulder at 260 nm, it lacks the minimum at 230 nm, and the absorption sores up below 230 nm. In this case only a small part of the absorbance at 260 nm is caused by DNA, most of it is just the tailing absorption of the humic acid contamination. However, the calculated DNA yield seems to be higher in the contaminated sample. Thus, DNA yield determined by UV-VIS, might be distorted by co-purifying contaminants and we recommend to check the DNA yield also by agarose gel electrophoresis .

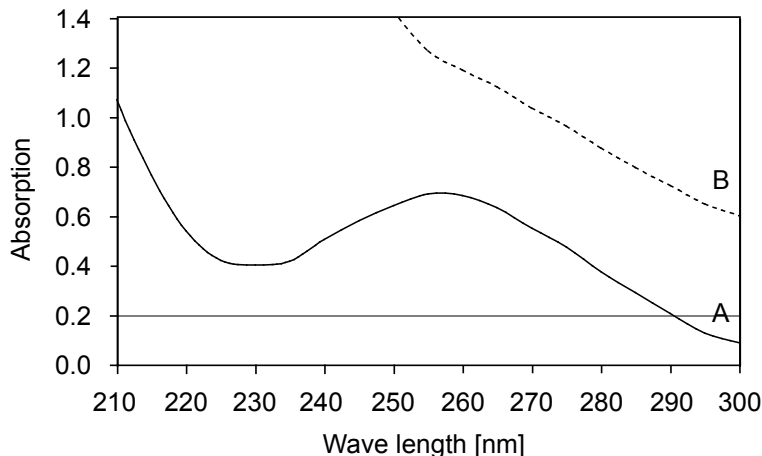


Figure 2

UV-VIS quantification of A) pure DNA and B) contaminated DNA

A) 7.7 μg in 100 μL , 1.84 A_{260}/A_{280} , 1.71 A_{260}/A_{230}

B) 9.3 μg in 100 μL , 1.35 A_{260}/A_{280} , 0.27 A_{260}/A_{230}

Purity ratio A_{260}/A_{230}

To facilitate the decision whether the yield as determined from A_{260} readings can be trusted or not, the ratio of the absorption at 260 nm and 230 nm can be used. The ratio A_{260}/A_{230} should be higher than 2.0 for pure DNA and is acceptable down to ratios of about 1.5. Smaller values around or even below 1.0, as shown in Figure 2, indicate significant amounts of impurities and the real DNA concentration is far below its calculated value.

Additionally, not only humic acids, but also proteins, saccharides, and other contaminants can be detected by a low A_{260}/A_{230} ratio.

Purity ratio A_{260}/A_{280}

Another indicator of DNA purity is the ratio A_{260}/A_{280} , which should be between 1.8 and 1.9. Values below 1.8 indicate protein contamination, whereas higher values indicate RNA contamination. However, this ratio should be treated with caution, since contamination with protein and RNA at the same time can compensate each other and result in a perfect A_{260}/A_{280} .

Agarose gel electrophoresis

As a consequence, the DNA should always be run on an agarose gel to verify the UV-VIS quantification especially if A_{260}/A_{230} and A_{260}/A_{280} are beyond the acceptable range. Figure 3 demonstrates that the contaminated sample B) of Figure 2 actually contains much less DNA than the pure sample A) in contrast to the UV-VIS results, which can easily be misinterpreted.

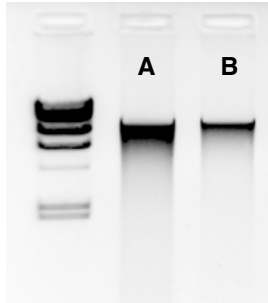


Figure 3

Gel analysis of A) pure and B) contaminated genomic DNA from soil

10 μL of each sample were run on a 1% TAE agarose gel (1 h, 100 V). The larger gel band of pure DNA A) proves a higher yield and concentration compared to the contaminated DNA sample which is in contrast to the UV-VIS quantification (A: 7.7 $\mu\text{g}/100 \mu\text{L}$, B: 9.3 $\mu\text{g}/100 \mu\text{L}$).

3 Storage conditions and preparation of working solutions

Attention: Buffers SB and SW1 contain guanidinium thiocyanate and guanidine hydrochloride, respectively. Wear gloves and goggles!

CAUTION: Buffers SB1 and SW1 contain guanidinium thiocyanate and guanidine hydrochloride which can form highly reactive compounds when combined with bleach (sodium hypochlorite). DO NOT add bleach or acidic solutions directly to the sample-preparation waste.

Storage conditions:

- All kit components should be stored at room temperature (18–25 °C) and are stable for at least one year. Storage at lower temperatures may cause precipitation of salts. If precipitation occurs, incubate the bottle for several minutes at about 30–40 °C and mix well until the precipitate is dissolved.

Before starting the first **NucleoSpin® 8 Soil** procedure prepare the following:

- Wash Buffer SW2:** Add the indicated volume of ethanol (96–100 %) to Buffer SW2 Concentrate. Mark the label of the bottle to indicate that ethanol was added. Buffer SW2 is stable at room temperature (18–25 °C) for at least one year.



NucleoSpin® 8 Soil	
REF	12 x 8 preps 740779
Wash Buffer SW2 (Concentrate)	100 mL Add 400 mL ethanol

4 Safety instructions

The following components of the **NucleoSpin® 8 Soil** kits contain hazardous contents.

Wear gloves and goggles and follow the safety instructions given in this section.

Only harmful features do not need to be labeled with H and P phrases up to 125 mL or 125 g.
Mindergefährliche Eigenschaften müssen bis 125 mL oder 125 g nicht mit H- und P-Sätzen gekennzeichnet werden.

Component	Hazard contents	GHS symbol	Hazard phrases	Precaution phrases
<i>Inhalt</i>	<i>Gefahrstoff</i>	<i>GHS-Symbol</i>	<i>H-Sätze</i>	<i>P-Sätze</i>
SB	Guanidinium thiocyanate 30–60 % Guanidinthiocyanat 30–60 % CAS 593-84-0	 WARNING ACHTUNG	302, 412, EUH031	260, 273, 301+312, 330
SW1	Guanidine hydrochloride 24–36 % and 2-propanol 20–50 % Guanidinhydrochlorid 36–50 % + Isopropanol 20–50 % CAS 50-01-1, 67-63-0	 WARNING ACHTUNG	226, 302, 319, 336	210, 233, 264, 280, 301+312, 305+351+338, 330, 337+313, 370+378, 403+235

Hazard phrases

H 226	Flammable liquid and vapour. <i>Flüssigkeit und Dampf entzündbar.</i>
H 302	Harmful if swallowed. <i>Gesundheitsschädlich bei Verschlucken.</i>
H 319	Causes serious eye irritation. <i>Verursacht schwere Augenreizung.</i>
H 336	May cause drowsiness or dizziness. <i>Kann Schläfrigkeit und Benommenheit verursachen.</i>
H 412	Harmful in contact with skin. <i>Schädlich für Wasserorganismen, mit langfristiger Wirkung.</i>
EUH 031	Contact with acids liberates toxic gas. <i>Entwickelt bei Berührung mit Säure giftige Gase.</i>

Precaution phrases

P 210	Keep away from heat, hot surfaces, sparks, open flames and other ignition sources. No smoking. <i>Von Hitze, heißen Oberflächen, Funken, offenen Flammen sowie anderen Zündquellenarten fernhalten. Nicht rauchen.</i>
P 233	Keep container tightly closed. <i>Behälter dicht verschlossen halten.</i>

- P 260 Do not breathe dust / fume / gas / mist / vapours / spray.
Staub/Rauch/Gas/Nebel/Dampf/Aerosol nicht einatmen.
- P 264 Wash ... thoroughly after handling.
Nach Handhabung ... gründlich waschen.
- P 273 Avoid release to the environment.
Freisetzung in die Umwelt vermeiden.
- P 280 Wear protective gloves / protective clothing / eye protection / face protection.
Schutzhandschuhe / Schutzkleidung / Augenschutz / Gesichtsschutz tragen.
- P 301+312 IF SWALLOWED: Call a POISON CENTER / doctor / ... / if you feel unwell.
BEI VERSCHLUCKEN: Bei Unwohlsein GIFTINFORMATIONSZENTRUM/Arzt/... anrufen.
- P 305+351+338 IF IN EYES: Rinse cautiously with water for several minutes. Remove contact lenses, if present and easy to do. Continue rinsing.
BEI KONTAKT MIT DEN AUGEN: Einige Minuten lang behutsam mit Wasser ausspülen. Eventuell vorhandene Kontaktlinsen nach Möglichkeit entfernen. Weiter ausspülen.
- P 330 Rinse mouth.
Mund ausspülen.
- P 337+313 If eye irritation persists: Get medical advice / attention.
Bei anhaltender Augenreizung: Ärztlichen Rat einholen/ärztliche Hilfe hinzuziehen.
- P 370+378 In case of fire: Use all extinguisher media to extinguish.
Bei Brand: Alle Löschmittel zum Löschen verwenden.
- P 403+235 Store in a well-ventilated place. Keep cool.
An einem gut belüfteten Ort aufbewahren. Kühl halten.

For further information please see Material Safety Data Sheets (www.mn-net.com).
Weiterführende Informationen finden Sie in den Sicherheitsdatenblättern (www.mn-net.com).



The symbol shown on labels refers to further safety information in this section.
Das auf Etiketten dargestellte Symbol weist auf weitere Sicherheitsinformationen dieses Kapitels hin.

5 Protocols

5.1 NucleoSpin® 8 Soil – vacuum processing

Establish a reliable vacuum source for the NucleoVac 96 Vacuum Manifold. It can be used in combination with a vacuum pump, house vacuum, or a water aspirator. We recommend a vacuum of -0.2 to -0.4 bar (reduction of atmospheric pressure) that can be adjusted by the NucleoVac Vacuum Regulator (see ordering information, section 6). Alternatively, adjust the vacuum so that sample and buffers run through the plate at a rate of 1–2 drops per second.

- For hardware requirements, refer to section 2.3.
- For detailed information on vacuum manifold setups, see page 19.
- For detailed information on each step, see page 20.

Before starting the preparation:

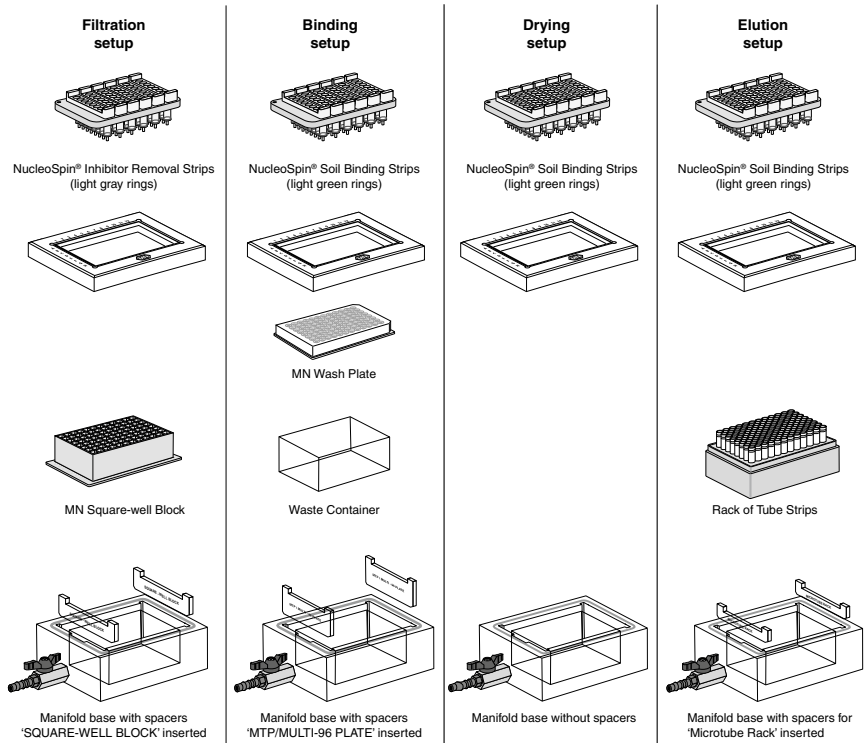
- Check Lysis Buffers SL1 and SL2 for precipitated SDS. Dissolve any precipitate by incubating the buffer at 30–40 °C for 10 min and shaking the bottle every 2 min.
- Check if Buffer SW2 was prepared according to section 3.

Protocol at a glance

1	Prepare sample	250–500 mg sample to NucleoSpin® Bead Tube Type A 700 µL SL1 or SL2
2	Adjust lysis conditions	150 µL Enhancer SX
3	Lyse sample	Mechanically homogenize
4	Precipitate contaminants	11,000 x g, 2 min 150 µL SL3 Vortex 5 s 0–4 °C, 5 min 11,000 x g, 1 min
5	Filter lysate	Assemble filtration setup Load samples -0.7 bar
6	Adjust binding conditions	250 µL SB Mix
7	Bind DNA	Assemble binding setup Load samples -0.2 to -0.6 bar

8	Wash silica membrane	500 µL SB
		-0.2 to -0.6 bar
		550 µL SW1
		-0.2 to -0.6 bar
		700 µL SW2
		-0.2 to -0.6 bar
9	Dry silica membrane	Assemble drying setup
		Full vacuum, 15 min or 37 °C, 20 min
10	Elute DNA	Assemble elution setup
		100–200 µL SE
		1 min
		-0.2 to -0.4 bar

Setup of vacuum manifold



Detailed protocol

- For hardware requirements, refer to section 2.3.
- For detailed information on vacuum manifold setups, see page 19.

Before starting the preparation:

- Check Lysis Buffers SL1 and SL2 for precipitated SDS. Dissolve any precipitate by incubating the buffer at 30–40 °C for 10 min and shaking the bottle every 2 min.
- Check if Buffer SW2 was prepared according to section 3.

1 Prepare sample

See section 2.6 and 2.7 for more information on the amount of starting material and the choice of lysis buffer. See section 2.9 for the repeated extraction of a sample to improve DNA yield.

Transfer **250–500 mg** fresh **sample material** to a **NucleoSpin® Bead Tube** containing the ceramic beads.

Important: **Do not fill** the tube **higher** than the **1 mL mark**.

Add **700 µL Buffer SL1** or **Buffer SL2**.

Note for very dry material: If the sample material soaks up too much lysis buffer, fill the NucleoSpin® Bead Tube up to the 1.5 mL mark with fresh lysis buffer.

Note for very wet material: Remove excess liquid before addition of lysis buffer, if necessary after spinning down the sample.

2 Adjust lysis conditions

Add **150 µL Enhancer SX** and close the cap.

Note: Enhancer SX ensures the highest possible DNA yield. It can, however, also promote the release of humic acids. See section 2.7 on how to lower the volume or omit the buffer entirely in order to increase DNA purity.

3 Lyse sample

See section 2.8 for more information on homogenization methods (e.g., FastPrep®-24 instrument, Vortex adapter).

Attach the NucleoSpin® Bead Tubes **horizontally** to a vortexer, for example, by taping or using a special adapter.

Vortex the samples at **full speed** and **room temperature** (18–25 °C) for **5 min**.

4 Precipitate contaminants

Centrifuge for **2 min** at **11,000 x g** to eliminate the foam caused by the detergent.

Note: The clear supernatant can be transferred to a new collection tube (not provided) prior to the following precipitation. This might result in more consistent yields from prep to prep and is highly recommended for carbonate containing samples. See also section 2.8 for repeated extraction of a sample to improve DNA yield.

Add **150 µL Buffer SL3** and vortex for **5 s**.

Incubate for **5 min** at **0–4 °C**.

Centrifuge for **1 min** at **11,000 x g**.

5 Filter lysate

Insert appropriate number of NucleoSpin® Inhibitor Removal Strips into a Column Holder A. Close any unused openings of the Column Holder A with NucleoSpin® Dummy Strips.

Note: Make sure that the NucleoSpin® Inhibitor Removal Strips are inserted tightly into the column holder. Not properly inserted strips may prevent sealing when vacuum is applied to the manifold.

Assemble filtration setup: Insert spacers labeled 'SQUARE-WELL BLOCK' with the notched side up. Place a MN Square-well Block onto the spacers. Close the manifold with the manifold lid and place the Column Holder A with the NucleoSpin® Inhibitor Removal Strips and the NucleoSpin® Dummy Strips on top of the lid (see Filtration setup, page 19).

Load up to **1 mL** of **clear supernatant** from step 4 into each well of the inhibitor removal strips.

Apply vacuum (-0.7 bar) until all liquid has passed the plate.

Repeat loading step to process more than 1 mL of lysate (see section 2.8 for repeated extraction).

Note: Use centrifuge in case of clogging (minimal bucket height has to be 85 mm to accommodate entire square-well block-filter plate sandwich).

Discard NucleoSpin® Inhibitor Removal Strips.

6 Adjust binding conditions

Add **250 µL Buffer SB** to the flowthrough in each well of the MN Square-well Block.

Mix by pipetting up and down.

7 Bind DNA

Insert appropriate number of NucleoSpin® Soil Binding Strips into a Column Holder A. Close any unused openings of the Column Holder A with NucleoSpin® Dummy Strips.

Note: Make sure that the NucleoSpin® Soil Binding Strips are inserted tightly into the column holder. Not properly inserted strips may prevent sealing when vacuum is applied to the manifold.

Assemble binding setup: Place the waste container into vacuum manifold base. Insert spacers labeled 'MTP/MULTI-96 PLATE' with the notched side up. Place the MN Wash Plate onto the spacers. Close the manifold with the manifold lid and place the Column Holder A with the NucleoSpin Soil Binding Strips and the NucleoSpin® Dummy Strips on top of the lid (see Binding setup, page 19).

Load **binding mixtures** from step 6 onto the wells of the binding strips.

Apply vacuum (-0.2 to -0.6 bar) until all liquid has passed the strip. Flowthrough rate should be about 1–2 drops per second. Adjust vacuum strength accordingly.

8 Wash and dry silica membrane

1st wash

Load **500 µL Buffer SB**.

Apply **vacuum (-0.2 to -0.6 bar)** until all liquid has passed the strips.

2nd wash

Load **550 µL Buffer SW1**.

Apply **vacuum (-0.2 to -0.6 bar)** until all liquid has passed the strips.

3rd wash

Load **700 µL Buffer SW2**.

Apply **vacuum (-0.2 to -0.6 bar)** until all liquid has passed the strip.

4th wash

Load **700 µL Buffer SW2**.

Apply **vacuum (-0.2 to -0.6 bar)** until all liquid has passed the strip.

9 Dry silica membrane

Assemble drying setup: Put NucleoSpin® Soil Binding Strips on a clean paper towel to remove residual wash buffer from plate outlets. Discard MN Wash Plate and remove waste container from vacuum manifold. Close the manifold with the manifold lid and place the NucleoSpin® Soil Binding Plate back on top of the lid (see Drying setup, page 19).

Apply **maximum vacuum** for **15 min** to dry membrane and to eliminate last traces of ethanol.

Note: Ethanol in Buffer SW2 inhibits enzymatic reactions and has to be removed completely before eluting the DNA. An additional 10 min incubation of the binding plate at 37 °C can further improve ethanol removal.

10 Elute DNA

Assemble elution setup: Insert spacers 'MICROTUBE RACK' into the vacuum manifold base. Place the Rack of Tube Strips onto the spacers. Close the manifold with the manifold lid and place the NucleoSpin® Soil Binding Strips back on top of the lid (see Elution Setup on page 19).

Load **100–200 µL Buffer SE** directly into the center of the silica membrane of each well.

Incubate for **1 min**.

Apply **vacuum (-0.2 to -0.4 bar)** until all liquid has passed the strips.

Note: Preheating Buffer SE to 70 °C or/and incubating the entire strip at elevated temperature for 5 min can increase final yield significantly. Furthermore, two consecutive elution steps (e.g., 2 x 100 µL) yield more DNA than one elution step with 200 µL.

Check DNA yield and quality by UV-VIS and agarose gel (see section 2.10 for more details).

5.2 NucleoSpin® 8 Soil – centrifuge processing

For this protocol a microtiter plate centrifuge is required that is able to accommodate the Column Holder C with the NucleoSpin® Soil Binding Strips stacked on the MN Square-well Block (minimum bucket height 85 mm). The centrifuge should be able to reach accelerations of 5,600–6,000 x *g*.

To collect flowthroughs in step 7 and 8, additional MN Square-well or Round-well Blocks are required (see ordering information). They can be recycled by washing with detergent and hot water. Incubate for 5 min in 0.4 M HCl, rinse with water again, and autoclave before next use.

Protocol-at-a-glance

- For detailed information on each step, see page 25.
- For hardware requirements, refer to section 2.3.

Before starting the preparation:

- Check Lysis Buffers SL1 and SL2 for precipitated SDS. Dissolve any precipitate by incubating the buffer at 30–40 °C for 10 min and shaking the bottle every 2 min.
- Check if Buffer SW2 was prepared according to section 3.

1	Prepare sample	250–500 mg sample to NucleoSpin® Bead Tube Type A 700 µL SL1 or SL2
2	Adjust lysis conditions	150 µL Enhancer SX
3	Lyse sample	Mechanically homogenize
4	Precipitate contaminants	11,000 x <i>g</i>, 2 min 150 µL SL3 Vortex 5 s 0–4 °C, 5 min 11,000 x <i>g</i>, 1 min
5	Filter lysate	Assemble filtration setup Load samples 5,600–6,000 x <i>g</i>, 5 min
6	Adjust binding conditions	250 µL SB Mix
7	Bind DNA	Load samples 5,600–6,000 x <i>g</i>, 5 min

8	Wash silica membrane	500 µL SB
		5,600–6,000 x g, 5 min
		550 µL SW1
		5,600–6,000 x g, 2 min
		700 µL SW2
		5,600–6,000 x g, 2 min
9	Dry silica membrane	700 µL SW2
		5,600–6,000 x g, 5 min
		5,600–6,000 x g, 15 min
		or
		37 °C, 20 min
		10
		1 min
		5,600-6,000 x g, 2 min

Detailed protocol

- For hardware requirements, refer to section 2.3.

Before starting the preparation:

- Check Lysis Buffers SL1 and SL2 for precipitated SDS. Dissolve any precipitate by incubating the buffer at 30–40 °C for 10 min and shaking the bottle every 2 min.
- Check if Buffer SW2 was prepared according to section 3.

1 Prepare sample

See section 2.6 and 2.7 for more information on the amount of starting material and the choice of lysis buffer. See section 2.9 for the repeated extraction of a sample to improve DNA yield.

Transfer **250–500 mg** fresh **sample material** to a **NucleoSpin® Bead Tube** containing the ceramic beads.

Important: Do not fill the tube **higher** than the **1 mL mark**.

Add **700 µL Buffer SL1** or **Buffer SL2**.

Note for very dry material: If the sample material soaks up too much lysis buffer, fill the NucleoSpin® Bead Tube up to the 1.5 mL mark with fresh lysis buffer.

Note for very wet material: Remove excess liquid before addition of lysis buffer, if necessary after spinning down the sample.

2 Adjust lysis conditions

Add 150 µL Enhancer SX and close the cap.

Note: Enhancer SX ensures the highest possible DNA yield. It can, however, also promote the release of humic acids. See section 2.6 on how to lower the volume or omit the buffer entirely in order to increase DNA purity.

3 Lyse sample

See section 2.8 for more information on homogenization methods (e.g., FastPrep®-24 instrument, Vortex adapter).

Attach the NucleoSpin® Bead Tubes **horizontally** to a vortexer, for example, by taping or using a special adapter.

Vortex the samples at **full speed** and **room temperature** (18–25 °C) for **5 min**.

4 Precipitate contaminants

Centrifuge for **2 min** at **11,000 x g** to eliminate the foam caused by the detergent.

Note: The clear supernatant can be transferred to a new collection tube (not provided) prior to the following precipitation. This might result in more consistent yields from prep to prep and is highly recommended for carbonate containing samples. See also section 2.8 for repeated extraction of a sample to improve DNA yield.

Add 150 µL Buffer SL3 and vortex for 5 s.

Incubate for 5 min at 0–4 °C.

Centrifuge for 1 min at 11,000 x g.

5 Filter lysate

Insert appropriate number of NucleoSpin® Inhibitor Removal Strips into the Column Holder C. Fill any unused openings of the Column Holder C with NucleoSpin® Dummy Strips or empty NucleoSpin Inhibitor removal strips.

Note: Be sure to equilibrate the centrifuge in each step of the protocol by using the second Column Holder C assembled accordingly as counterweight.

Place the NucleoSpin® Column Holder C onto the **MN Square-well Block**.

Load up to 1 mL **clear supernatant** from step 4 to each well of the plate.

Centrifuge at **5,600–6,000 x g** for 5 min.

Repeat loading step to process more than 1 mL of lysate (see section 2.8 for repeated extraction).

Discard NucleoSpin® Inhibitor Removal Strips.

6 Adjust binding conditions

Add **250 µL Buffer SB** to the flowthrough in each well of the MN Square-well Block.

Mix by pipetting up and down.

7 Bind DNA

Place the **NucleoSpin® Soil Binding Strips** on top of a **new square-well or round-well block** (not provided).

Load **binding mixtures** from step 6 onto the binding plate.

Centrifuge at **5,600–6,000 x g** for 5 min. Discard flowthrough.

8 Wash and dry silica membrane

1st wash

Load **500 µL Buffer SB**.

Centrifuge at **5,600–6,000 x g** for **2 min**. Discard flowthrough.

2nd wash

Load **550 µL Buffer SW1**.

Centrifuge at **5,600–6,000 x g** for **2 min**. Discard flowthrough.

3rd wash

Load **700 µL Buffer SW2**.

Centrifuge at **5,600–6,000 x g** for **2 min**. Discard flowthrough.

4th wash

Load **700 µL Buffer SW2**.

Centrifuge at **5,600–6,000 x g** for **5 min**. Discard flowthrough.

9 Dry silica membrane

Centrifuge at **5,600–6,000 x g** for **15 min** or incubate the strips for **20 min** at **37 °C**.

Note: Ethanol in Buffer SW2 inhibits enzymatic reactions and has to be removed completely before eluting the DNA. Incubation at 37 °C is more effective to remove traces of wash buffer and should be preferred if possible.

10 Elute DNA

Place the NucleoSpin® Column Holder C with the NucleoSpin® Soil Binding Strips on an opened Rack of Tube Strips.

Load **100–200 µL Buffer SE** directly into the center of the silica membrane of each well.

Incubate for **1 min**.

Centrifuge at **5,600–6,000 x g** for **2 min**.

Note: Preheating Buffer SE to 70 °C or/and incubating the entire strip at elevated temperature for 5 min can increase final yield significantly. Furthermore, two consecutive elution steps (e.g., 2 x 100 µL) yield more DNA than one elution step with 200 µL.

Check DNA yield and quality by UV-VIS and agarose gel (see section 2.9 for more details).

6 Appendix

6.1 Troubleshooting

Problem	Possible cause and suggestions
	<p data-bbox="288 308 546 330"><i>Suboptimal lysis conditions</i></p> <ul data-bbox="288 347 984 564" style="list-style-type: none"> <li data-bbox="288 347 984 448">• Too much sample material was filled into the NucleoSpin® Bead Tube. Too little head space does not allow the necessary motion of the beads to disrupt the sample. Use less sample material (see section 2.5 for more information). <li data-bbox="288 466 984 564">• Compare the yields obtained with Lysis Buffer SL1 and SL2 in parallel purifications each with and without addition of Enhancer SX to find the optimal lysis buffer conditions (see section 2.6 for more information).
	<p data-bbox="288 582 904 604"><i>Insufficient disruption and/or homogenization of starting material</i></p> <ul data-bbox="288 622 984 724" style="list-style-type: none"> <li data-bbox="288 622 984 724">• Shaking of the NucleoSpin® Bead Tube was too weak or not long enough. Increase shaking time and velocity or use another shaking device (see section 2.6 for more information). Make sure that the NucleoSpin® Bead Tube is fixed horizontally on the vortexer.
Poor or no DNA yield	<p data-bbox="288 742 684 764"><i>Reagents not applied or restored properly</i></p> <ul data-bbox="288 782 984 1150" style="list-style-type: none"> <li data-bbox="288 782 984 804">• Always dispense exactly the buffer volumes given in the protocol! <li data-bbox="288 821 984 876">• Always follow closely the given instructions with regard to order and mode of mixing (shaking, vortexing, etc). <li data-bbox="288 893 984 948">• Add the indicated volume of ethanol (96–100 %) to Wash Buffer SW2 Concentrate and mix thoroughly (see section 3 for more information). <li data-bbox="288 965 984 1083">• Store kit components at room temperature (18–25 °C). Storage at lower temperatures may cause salt precipitation. Check Lysis Buffer SL1 and SL2 for white precipitate. If precipitation occurred, incubate the bottle for 10 min at 30–40 °C and shake every 2 minutes until all precipitate is dissolved (see section 3 for more information). <li data-bbox="288 1101 984 1150">• Keep bottles tightly closed in order to prevent evaporation or contamination.
	<p data-bbox="288 1168 628 1190"><i>Sample material not stored properly</i></p> <ul data-bbox="288 1208 984 1230" style="list-style-type: none"> <li data-bbox="288 1208 984 1230">• Whenever possible, use fresh material.
DNA is degraded	<p data-bbox="288 1248 673 1270"><i>Too harsh mechanical sample disruption</i></p> <ul data-bbox="288 1295 984 1318" style="list-style-type: none"> <li data-bbox="288 1295 984 1318">• Reduce intensity or incubation time of mechanical sample lysis. <p data-bbox="288 1335 561 1358"><i>DNA is degraded by DNases</i></p> <ul data-bbox="288 1375 984 1398" style="list-style-type: none"> <li data-bbox="288 1375 984 1398">• Add at least 10–15 µL Enhancer SX to the lysate.

Problem	Possible cause and suggestions
Suboptimal performance of DNA in downstream experiments	<i>DNA yield was overestimated</i>
	<ul style="list-style-type: none"> If DNA eluates are not completely free of contaminants (e.g., RNA, protein, humic substances) UV-VIS quantification based on A₂₆₀ is not reliable due to the contribution of the contaminants to the absorption at 260 nm.
	<i>Carry-over of ethanol or salt</i>
	<ul style="list-style-type: none"> Make sure to dry the silica membrane and the NucleoSpin® Soil Binding Plate completely before elution to avoid carry-over of ethanolic Wash Buffer SW2.
	<i>Contamination with PCR inhibitors</i>
	<ul style="list-style-type: none"> The DNA purity can be increased by lowering the amount of starting material (see section 2.5 for more information). Enhancer SX can facilitate the release of humic substances. Reduce Enhancer SX to 10 µL or omit the buffer entirely (see section 2.6 for more information). Make sure to carefully follow the washing instructions. Dilute DNA 1:10 to reduce concentration of inhibitors.

6.2 Ordering information

Product	REF	Pack of
NucleoSpin® 8 Soil	740779	12 x 8 preps
Buffer SB	740785.50	60 mL
Buffer SL1	740781.30	30 mL
Buffer SL2	740782.30	30 mL
Buffer SL3	740783.50	50 mL
Enhancer SX	740784.50	50 mL
NucleoSpin® Bead Tubes Type A (0.6–0.8 mm ceramic beads; recommended for stool, soil, and sediments)	740786.50	50
NucleoSpin® Bead Tubes Type B (40–400 µm glass beads; recommended for bacteria)	740812.50	50
NucleoSpin® Bead Tubes Type C (1–3 mm corundum; recommended for yeast)	740813.50	50
NucleoSpin® Bead Tubes Type D (3 mm steel balls; recommended for insects)	740814.50	50

Product	REF	Pack of
NucleoSpin® Bead Tubes Type E (40–400 µm glass beads and 3 mm steel balls; recommended for hard-to-lyse bacteria within insect or tissue samples)	740815.50	50
NucleoSpin® Bead Tubes Type F (1–3 mm corundum + 3 mm steel balls; use only with MN Bead Tube Holder!)	740816.50	50
MN Bead Tube Holder	740469	1
MN Square-well Block	740476	4
	740476.24	24
MN Wash Plate	740479	4
	740479.24	24
Rack of Tube Strips (1 set consists of 1 rack, 12 strips with 8 tubes each, and 12 Cap Strips)	740477	4 sets
	740477.24	24 sets
Cap Strips	740478	48
	740478.24	288
Self-adhering PE Foil	740676	50
NucleoVac 96 Vacuum Manifold	740681	1
NucleoVac Vacuum Regulator	740641	1
Starter Set A (for processing of NucleoSpin® 8-well strips on NucleoVac 96 Vacuum Manifold)	740682	1
Starter Set C (for processing of NucleoSpin® 8-well strips under centrifugation)	740684	1

Visit www.mn-net.com for more detailed product information.

6.3 Product use restriction/warranty

NucleoSpin® 8 Soil kit components are intended, developed, designed, and sold FOR RESEARCH PURPOSES ONLY, except, however, any other function of the product being expressly described in original MACHEREY-NAGEL product leaflets.

MACHEREY-NAGEL products are intended for GENERAL LABORATORY USE ONLY! MACHEREY-NAGEL products are suited for QUALIFIED PERSONNEL ONLY! MACHEREY-NAGEL products shall in any event only be used wearing adequate PROTECTIVE CLOTHING. For detailed information please refer to the respective Material Safety Data Sheet of the product! MACHEREY-NAGEL products shall exclusively be used in an ADEQUATE TEST ENVIRONMENT. MACHEREY-NAGEL does not assume any responsibility for damages due to improper application of our products in other fields of application. Application on the human body is STRICTLY FORBIDDEN. The respective user is liable for any and all damages resulting from such application.

DNA/RNA/PROTEIN purification products of MACHEREY-NAGEL are suitable for IN VITRO-USES ONLY!

ONLY MACHEREY-NAGEL products specially labeled as IVD are also suitable for IN VITRO-diagnostic use. Please pay attention to the package of the product. IN VITRO-diagnostic products are expressly marked as IVD on the packaging.

IF THERE IS NO IVD SIGN, THE PRODUCT SHALL NOT BE SUITABLE FOR IN VITRO-DIAGNOSTIC USE!

ALL OTHER PRODUCTS NOT LABELED AS IVD ARE NOT SUITED FOR ANY CLINICAL USE (INCLUDING, BUT NOT LIMITED TO DIAGNOSTIC, THERAPEUTIC AND/OR PROGNOSTIC USE).

No claim or representations is intended for its use to identify any specific organism or for clinical use (included, but not limited to diagnostic, prognostic, therapeutic, or blood banking). It is rather in the responsibility of the user or - in any case of resale of the products - in the responsibility of the reseller to inspect and assure the use of the DNA/RNA/protein purification products of MACHEREY-NAGEL for a well-defined and specific application.

MACHEREY-NAGEL shall only be responsible for the product specifications and the performance range of MN products according to the specifications of in-house quality control, product documentation and marketing material.

This MACHEREY-NAGEL product is shipped with documentation stating specifications and other technical information. MACHEREY-NAGEL warrants to meet the stated specifications. MACHEREY-NAGEL's sole obligation and the customer's sole remedy is limited to replacement of products free of charge in the event products fail to perform as warranted. Supplementary reference is made to the general business terms and conditions of MACHEREY-NAGEL, which are printed on the price list. Please contact us if you wish to get an extra copy.

There is no warranty for and MACHEREY-NAGEL is not liable for damages or defects arising in shipping and handling (transport insurance for customers excluded), or out of accident or improper or abnormal use of this product; defects in products or components not manufactured by MACHEREY-NAGEL, or damages resulting from such non-MACHEREY-NAGEL components or products.

MACHEREY-NAGEL makes no other warranty of any kind whatsoever, and SPECIFICALLY DISCLAIMS AND EXCLUDES ALL OTHER WARRANTIES OF ANY KIND OR NATURE

WHATSOEVER, DIRECTLY OR INDIRECTLY, EXPRESS OR IMPLIED, INCLUDING, WITHOUT LIMITATION, AS TO THE SUITABILITY, REPRODUCTIVITY, DURABILITY, FITNESS FOR A PARTICULAR PURPOSE OR USE, MERCHANTABILITY, CONDITION, OR ANY OTHER MATTER WITH RESPECT TO MACHEREY-NAGEL PRODUCTS.

In no event shall MACHEREY-NAGEL be liable for claims for any other damages, whether direct, indirect, incidental, compensatory, foreseeable, consequential, or special (including but not limited to loss of use, revenue or profit), whether based upon warranty, contract, tort (including negligence) or strict liability arising in connection with the sale or the failure of MACHEREY-NAGEL products to perform in accordance with the stated specifications. This warranty is exclusive and MACHEREY-NAGEL makes no other warranty expressed or implied.

The warranty provided herein and the data, specifications and descriptions of this MACHEREY-NAGEL product appearing in MACHEREY-NAGEL published catalogues and product literature are MACHEREY-NAGEL's sole representations concerning the product and warranty. No other statements or representations, written or oral, by MACHEREY-NAGEL's employees, agent or representatives, except written statements signed by a duly authorized officer of MACHEREY-NAGEL are authorized; they should not be relied upon by the customer and are not a part of the contract of sale or of this warranty.

Product claims are subject to change. Therefore please contact our Technical Service Team for the most up-to-date information on MACHEREY-NAGEL products. You may also contact your local distributor for general scientific information. Applications mentioned in MACHEREY-NAGEL literature are provided for informational purposes only. MACHEREY-NAGEL does not warrant that all applications have been tested in MACHEREY-NAGEL laboratories using MACHEREY-NAGEL products. MACHEREY-NAGEL does not warrant the correctness of any of those applications.

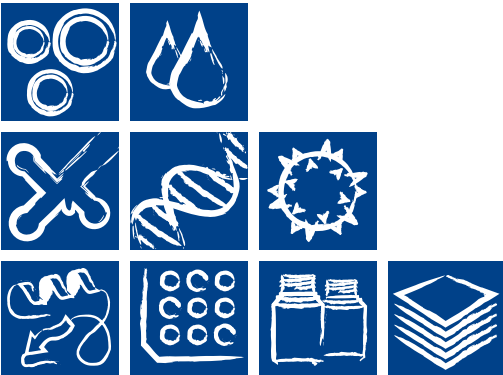
Last updated: 03/2018, Rev. xx

Please contact:
MACHEREY-NAGEL GmbH & Co. KG
Tel.: +49 24 21 969-270
tech-bio@mn-net.com

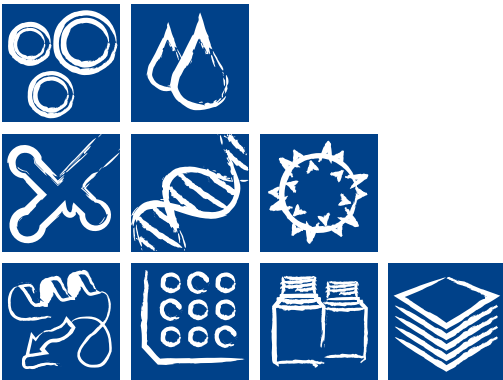
Trademarks:

FastPrep is a registered trademark of MP Biomedicals, LLC
NucleoSpin is a registered trademark of MACHEREY-NAGEL GmbH & Co KG
Vortex-Genie is a registered trademark of Scientific Industries, Inc.

All used names and denotations can be brands, trademarks, or registered labels of their respective owner – also if they are not special denotation. To mention products and brands is only a kind of information (i.e., it does not offend against trademarks and brands and can not be seen as a kind of recommendation or assessment). Regarding these products or services we can not grant any guarantees regarding selection, efficiency, or operation.



Plasmid DNA
Clean-up
RNA
Genomic DNA
Viral RNA and DNA
Protein
High throughput
Accessories
Auxiliary tools



www.mn-net.com

MACHEREY-NAGEL



MACHEREY-NAGEL GmbH & Co. KG · Neumann-Neander-Str. 6-8 · 52355 Düren · Germany

DE / International:

Tel.: +49 24 21 969-0
 Fax: +49 24 21 969-199
 E-mail: info@mn-net.com

CH:

Tel.: +41 62 388 55 00
 Fax: +41 62 388 55 05
 E-mail: sales-ch@mn-net.com

FR:

Tel.: +33 388 68 22 68
 Fax: +33 388 51 76 88
 E-mail: sales-fr@mn-net.com

US:

Tel.: +1 484 821 0984
 Fax: +1 484 821 1272
 E-mail: sales-us@mn-net.com

