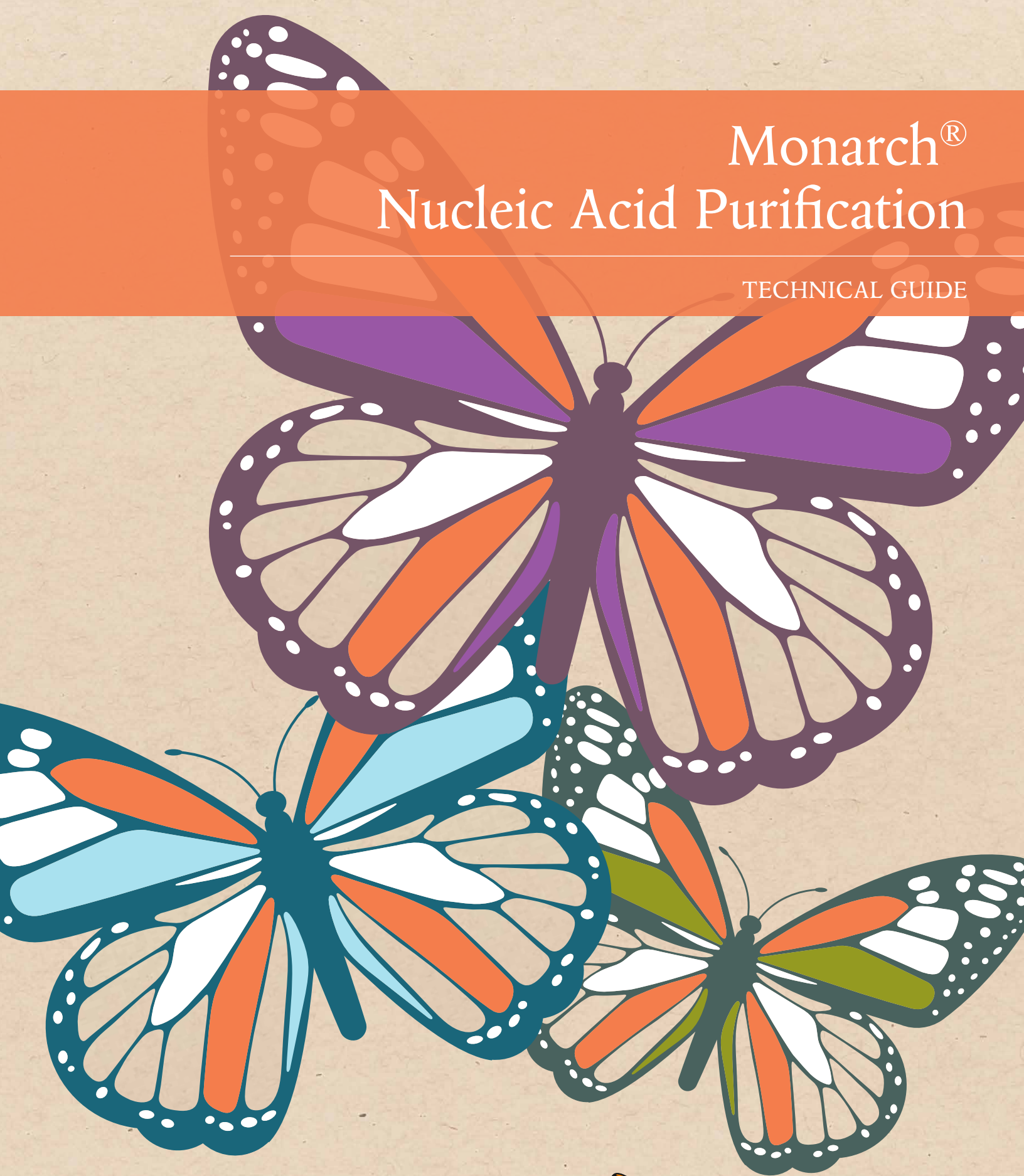


Monarch[®] Nucleic Acid Purification

TECHNICAL GUIDE



 NEW ENGLAND
BioLabs[®]

be **INSPIRED**
drive **DISCOVERY**
stay **GENUINE**

Make the right choice and migrate to Monarch

Monarch® Nucleic Acid Purification Kits are the perfect complement to many molecular biology workflows. Recover pure, intact DNA and RNA in minutes with our fast, user-friendly protocols and optimized buffer systems, and focus your time on the experiments that will drive your research forward. The Monarch nucleic acid purification portfolio can serve your needs, whether you are isolating nucleic acids from biological samples, cleaning up DNA and RNA from enzymatic reactions, extracting DNA fragments from gels, or purifying plasmids.

Monarch kits are all designed with sustainability in mind; whenever possible, kits and components are made with significantly less plastic and are packaged with responsibly-sourced, recyclable packaging. Furthermore, plastic recovered during the manufacture of Monarch columns is used to manufacture other plastic-based NEB products.

AVAILABLE KITS:

Monarch Genomic DNA Purification Kit

- Purify high-quality, high molecular weight DNA from a variety of sample types
- Achieve excellent DNA yields with fast, user friendly protocols

Monarch Total RNA Miniprep Kit

- Choose a convenient, all-in-one kit for multiple sample types
- Efficiently remove DNA with included DNase I and gDNA removal columns
- Process blood and tissue using included Proteinase K

Monarch RNA Cleanup Kits

- Purify and concentrate RNA after enzymatic reactions and RNA synthesis
- Choose between 3 convenient binding capacities (10 µg, 50 µg, and 500 µg)

Monarch Plasmid Miniprep Kit

- Easily purify plasmids from bacterial cultures
- Monitor your progress with our convenient colored-buffer system

Monarch PCR & DNA Cleanup Kit

- Purify DNA from enzymatic reactions in 5 minutes and elute in as little as 6µl
- Eliminate buffer carryover with columns that do not contain retaining rings
- **New!** Use the same kit to purify small DNA fragments and oligos

Monarch DNA Gel Extraction Kit

- Quickly recover DNA from agarose gels in as little as 6 µl
- Eliminate buffer carryover with columns that do not contain retaining rings

PURCHASE COLUMNS AND BUFFERS SEPARATELY FOR ADDED CONVENIENCE

Visit [NEBMonarch.com](https://www.neb.com/monarch) to learn more and request a sample.

Designed for sustainability – Monarch kits* ...

have up to **44%** less plastic

could eliminate **>140** tons of plastic each year

use **recyclable** packaging materials

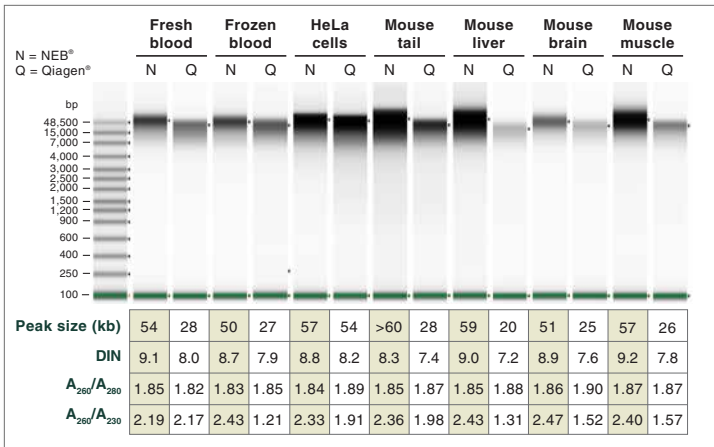
use boxes made from **100%** post-consumer paper

*Visit [NEBMonarchPackaging.com](https://www.neb.com/monarchpackaging) for details.

Monarch Genomic DNA Purification Kit

The Monarch Genomic DNA Purification Kit is a comprehensive solution for cell lysis, RNA removal, and purification of intact genomic DNA (gDNA) from a wide variety of biological samples, including cultured cells, blood and mammalian tissues. Additionally, bacteria and yeast can be processed with extra steps to enhance lysis in these tough-to-lyse samples. Protocols are also included to enable purification from clinically-relevant samples, such as saliva and cheek swabs, as well as rapid cleanup of previously extracted gDNA. Purified gDNA has high quality metrics and minimal residual RNA. The purified gDNA is suitable for downstream applications, such as endpoint PCR, qPCR and library prep for next generation sequencing (NGS).

The Monarch Genomic DNA Purification Kit provides excellent yields of higher quality, higher molecular weight DNA than the Qiagen® DNeasy® Blood & Tissue Kit



Agilent Technologies® 4200 TapeStation® Genomic DNA ScreenTape was used for analysis of gDNA purified from blood, cultured cells and tissue samples using the relevant protocols of the Monarch Genomic DNA Purification Kit and the Qiagen DNeasy Blood & Tissue Kit. gDNA was eluted in 100 µl and 1/100 of the eluates (~1 µl) was loaded on a Genomic DNA ScreenTape. Starting materials used: 100 µl fresh human whole blood, 100 µl frozen pig blood, 1 x 10⁶ HeLa cells and 10 mg frozen tissue powder. Monarch-purified gDNA samples typically show peak sizes 50–70 kb and DINs of ~9. DNeasy-purified gDNA peak sizes are typically < 30 kb with DINs ~7–8. DNeasy kits produce lower yields and low A_{260/230} ratios for liver, brain, muscle and frozen blood.

ADVANTAGES

- Use with a wide variety of sample types
- Achieve higher yields, especially with difficult tissue samples (e.g., brain and muscle)
- Effectively remove RNA (< 1% residual RNA) with optimized buffer chemistry and included RNase A
- Isolate longer DNA (peak size > 50 kb), which is ideal for long-read sequencing platforms
- Save time with fast protocols, efficient lysis steps and minimal hands on time

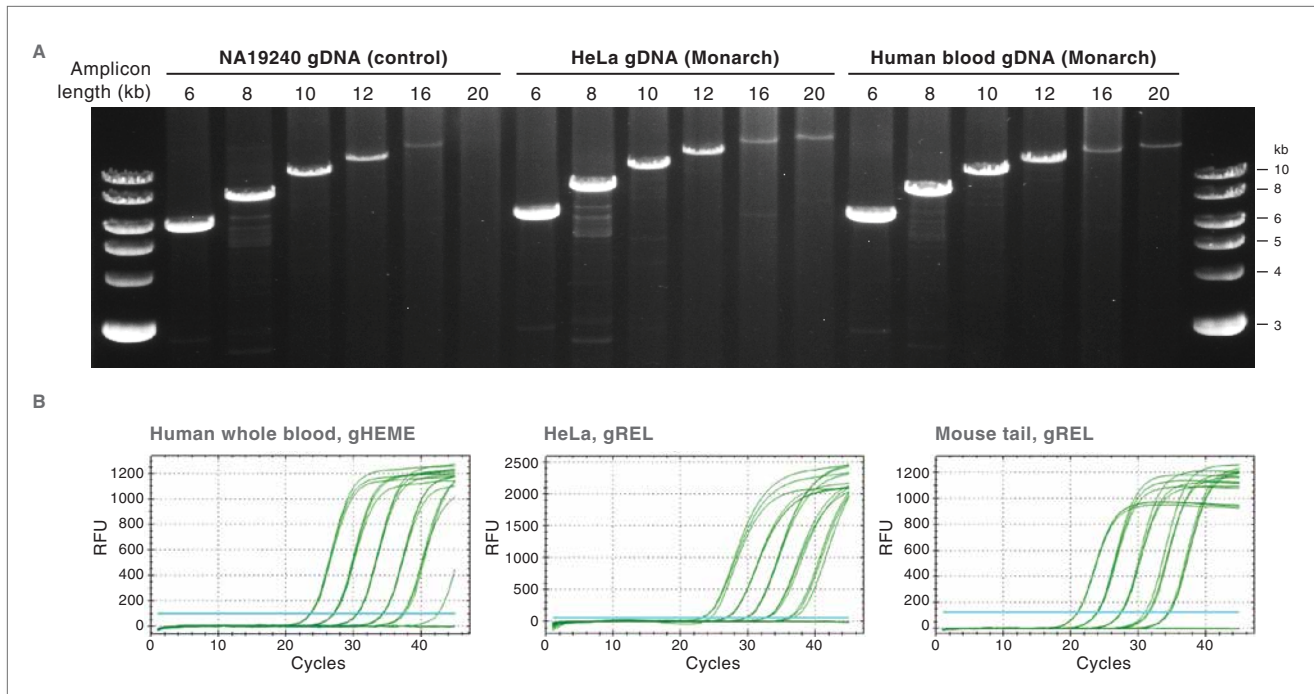
SPECIFICATIONS

- **Recommended Input Amount:** Varies by sample type. See page 6.
- **Binding Capacity:** 30 µg genomic DNA
- **Genomic DNA Size:** Peak size > 50 kb for most sample types; may be lower for saliva and buccal swabs
- **Elution Volume:** ≥ 35 µl (100 µl is recommended)
- **Purity:** A_{260/280} ≥ 1.8, A_{260/230} ≥ 2.0
- **RNA Content:** < 1% (with included RNase A treatment)
- **Compatible Downstream Applications:** endpoint PCR, qPCR, library preparation for NGS



Monarch Genomic DNA Purification Kit (Cont.)

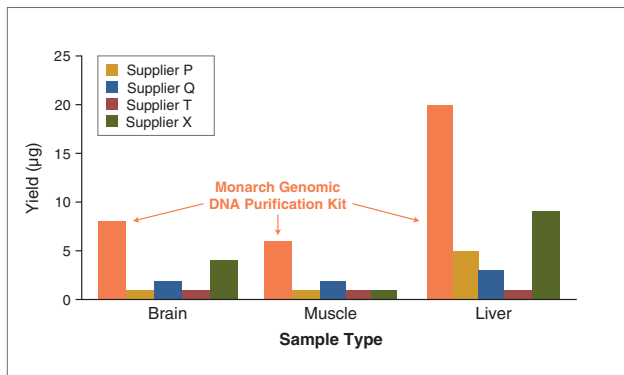
The Monarch Genomic DNA Purification Kit generates high quality genomic DNA suitable for sensitive applications like long range PCR and qPCR



A. Amplification reactions were set up with primer pairs specific for 6, 8, 10, 12, 16, 20 kb amplicons from human DNA. LongAmp® Hot Start Taq 2X Master Mix (NEB #M0533) was used and 25 ng template DNA was added to each sample. PCR reactions were carried out on an Applied Biosystems 2720 Thermal Cycler. Monarch-purified genomic DNA isolated from HeLa cells and human blood were compared to commercially available reference DNA from the human cell line NA19240 F11. 10 µl was loaded on a 1.5% agarose gel, using the 1 kb DNA Ladder (NEB #N3232) as a marker. Results indicated DNA was of high-integrity and suitable for long range PCR.

B. Monarch-purified genomic DNA from human whole blood, HeLa cells and mouse tail was diluted to produce a five log range of input template concentrations. The results were generated using primers targeting gHEME (human whole blood) and gREL (HeLa, mouse tail) for qPCR assays with the Luna® Universal qPCR Master Mix (NEB #M3003) and cycled on a Bio-Rad® CFX Touch qPCR thermal cycler. Results indicated that DNA is highly pure and free from inhibitors, optimal for qPCR.

The Monarch Genomic DNA Purification Kit provides excellent yields for difficult tissue types



Duplicate 10 mg samples of RNAlater®-stabilized rat tissue were cut to small pieces and subsequently lysed and purified according to the protocols provided for each kit. Optional RNase A steps were included. Elution was carried out with 100 µl elution buffer provided in the respective kits. Yields displayed are averages of the duplicate samples, and represent the genomic DNA yield after correcting for the RNA content as determined by LC-MS. Results indicate that the Monarch Genomic DNA Purification Kit provides excellent yields for a wide range of tissues, which can be problematic for other commercial kits.

DNA purified with the Monarch Genomic DNA Purification Kit has significantly lower residual RNA across all sample types

| | Blood | HeLa | Tail | Liver | Brain | Muscle |
|------------|-------|-------|-------|-------|-------|--------|
| Monarch* | 0.1% | 0.6% | 0.3% | 1.7% | 0.7% | 0.5% |
| Supplier P | 33.9% | 50.8% | 32.1% | 80.5% | 91.3% | 90.9% |
| Supplier Q | 1.4% | 10.1% | 0.7% | 5.9% | 4.1% | 2.7% |
| Supplier T | 10.0% | 2.2% | 5.6% | 39.0% | 46.0% | 7.1% |
| Supplier X | 0.4% | 5.1% | 0.1% | 0.3% | 1.8% | 3.1% |

Legend: Good (<2%) (Green), Moderate (2–10%) (Yellow), Bad (>10%) (Red)

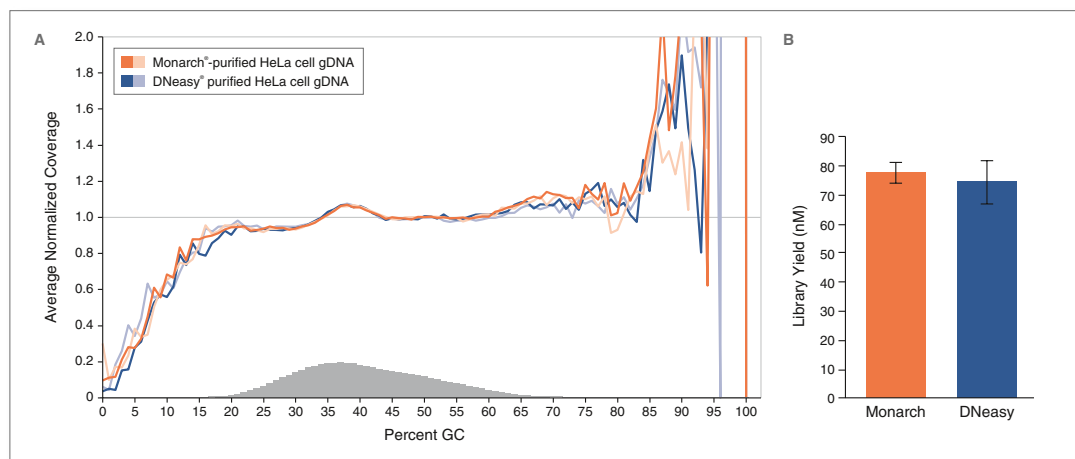
RNA content present in genomic DNA eluates from various kits was evaluated by LC-MS. All samples were processed in duplicate according to manufacturers' recommendations and were eluted in 100 µl. Starting materials used: 100 µl human blood, 1 x 10⁶ HeLa cells, 10 mg of RNAlater-stabilized mouse (tail) and rat tissue samples (others). 1 µg of each sample was treated with the Nucleoside Digestion Mix (NEB #M0649) and subjected to LC-MS.

Values displayed are averages of duplicate measures and indicate the percentage of riboguanoside (rG) versus the total amount of ribo- and deoxyriboguanoside in the samples. Actual RNA content may be lower for all samples, since rG is more abundantly co-purified in silica preps than other RNA bases. The Monarch Genomic DNA Purification Kit consistently delivers residual RNA below 1%–2% levels, which is usually undetectable with most analysis methods and lower than what is seen for other commercial kits.

Compatibility with Next Generation Sequencing

The Monarch Genomic DNA Purification Kit is an excellent choice for DNA extraction upstream of library preparation for next generation sequencing. DNA purified with this kit is high-quality and of high molecular weight (peak size > 50 kb), making it an outstanding choice for preparation of libraries for nanopore sequencing and other long read platforms. The kit is also optimized to selectively bind DNA, not RNA, and is also supplied with RNase A for (optional) removal of any residual RNA, allowing for purification of DNA with extremely low RNA contamination.

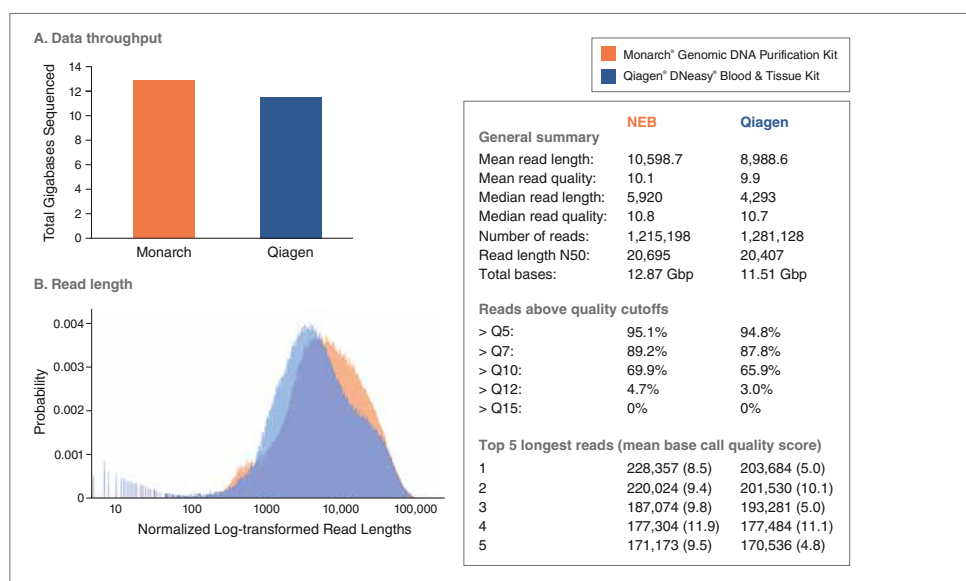
The Monarch Genomic DNA Purification Kit generates excellent input material for NGS library preparation with NEBNext® kits for Illumina®



A. Duplicate libraries were made from 100 ng HeLa cell gDNA purified with Monarch (orange) or Qiagen DNeasy Blood & Tissue Kit (blue) using the NEBNext Ultra II FS DNA Library Prep Kit for Illumina (NEB #E7805). Libraries were sequenced on an Illumina MiSeq®. Reads were mapped using Bowtie 2.2.4 and GC coverage was calculated using Picard's CollectGCBiasMetrics (v1.117). Expected normalized coverage of 1.0 is indicated by the horizontal grey line, the number of 100 bp regions at each %GC is indicated by the vertical grey bars, and the colored lines represent the normalized coverage for each library. Monarch GC coverage matched Qiagen DNeasy results.

B. High yield libraries are achieved from Monarch-purified gDNA. Library yields of the samples described above were assessed on an Agilent Technologies® 2100 BioAnalyzer using a High Sensitivity DNA Kit.

The Monarch Genomic DNA Purification Kit generates high quality DNA for nanopore sequencing



HeLa cell genomic DNA was extracted using either the Monarch Genomic DNA Purification Kit or the Qiagen DNeasy Blood & Tissue Kit. One microgram of purified DNA was used to prepare Oxford Nanopore Technology (ONT) sequencing libraries following the ONT 1D Ligation Sequencing Kit (SQK-LSK109) protocol without DNA fragmentation. Libraries were loaded on a GridION (Flow cell R9.4.1) and the data was collected for 48 hrs. Libraries produced using the Monarch gDNA exceeded the Qiagen libraries on common sequencing metrics including: A. total sequencing data collected, B. read length. Data was generated using NanoComp (Bioinformatics, Volume 34, Issue 15, 1 August 2018, Pages 2666–2669).

Guidelines for Choosing Sample Input Amounts When Using the Monarch Genomic DNA Purification Kit

Genomic DNA yield, purity and integrity vary immensely based on sample type, input amount and sample condition. Below, we have provided some empirical yield, purity, and DIN data from a wide variety of sample types as well as guidance on the maximal input amounts for each of those samples when using the Monarch Genomic DNA Purification Kit. It is very important not to overload the column and the buffer system when extracting and purifying gDNA, as DNA yields, purity, integrity, and length may suffer. Inputs that will result in ~100 ng of gDNA should be considered the minimum input amount for this kit (5 µl whole blood, 1 x 10⁴ cultured cells or 0.2 mg tissue). If using smaller amounts, the use of carrier RNA is recommended (see product manual for more details). Visit www.neb.com/MonarchgDNAinputs for updates and additional validated samples.

| SAMPLE TYPE | RECOMMENDED INPUT AMOUNT | TYPICAL YIELD (µg) | DIN | MAXIMUM INPUT AMOUNT |
|--|---------------------------|--------------------|---------|---------------------------|
| TISSUE* | | | | |
| Tail (mouse) | 10 mg | 12–20 | 8.5–9.5 | 25 mg |
| Ear (mouse) | 10 mg | 18–21 | 8.5–9.5 | 10 mg |
| Liver (mouse and rat) | 10 mg | 15–30 | 8.5–9.5 | 15 mg |
| Kidney (mouse) | 10 mg | 10–25 | 8.5–9.5 | 10 mg |
| Spleen (mouse) | 10 mg | 30–70 | 8.5–9.5 | 10 mg |
| Heart (mouse) | 10 mg | 9–10 | 8.5–9.5 | 25 mg |
| Lung (mouse) | 10 mg | 14–20 | 8.5–9.5 | 15 mg |
| Brain (mouse and rat) | 10 mg | 4–10 | 8.5–9.5 | 12 mg |
| Muscle (mouse and rat) | 10 mg | 4–7 | 8.5–9.5 | 25 mg |
| Muscle (deer) | 10 mg | 5 | 8.5–9.5 | 25 mg |
| BLOOD** | | | | |
| Human (whole) | 100 µl | 2.5–4 | 8.5–9.5 | 100 µl |
| Mouse | 100 µl | 1–3 | 8.5–9.5 | 100 µl |
| Rabbit | 100 µl | 3–4 | 8.5–9.5 | 100 µl |
| Pig | 100 µl | 3.5–5 | 8.5–9.5 | 100 µl |
| Guinea pig | 100 µl | 3–8 | 8.5–9.5 | 100 µl |
| Cow | 100 µl | 2–3 | 8.5–9.5 | 100 µl |
| Horse | 100 µl | 4–7 | 8.5–9.5 | 100 µl |
| Dog | 100 µl | 2–4 | 8.5–9.5 | 100 µl |
| Chicken (nucleated) | 10 µl | 30–45 | 8.5–9.5 | 10 µl |
| CELLS | | | | |
| HeLa | 1 x 10 ⁶ cells | 7–9 | 9.0–9.5 | 5 x 10 ⁶ cells |
| HEK293 | 1 x 10 ⁶ cells | 7–9 | 9.0–9.5 | 5 x 10 ⁶ cells |
| NIH3T3 | 1 x 10 ⁶ cells | 6–7.5 | 9.0–9.5 | 5 x 10 ⁶ cells |
| BACTERIA | | | | |
| <i>E. coli</i> (Gram-negative) | 2 x 10 ⁹ cells | 6–10 | 8.5–9.0 | 2 x 10 ⁹ cells |
| <i>Rhodobacter</i> sp. (Gram-negative) | 2 x 10 ⁹ cells | 6–10 | 8.5–9.0 | 2 x 10 ⁹ cells |
| <i>B. cereus</i> (Gram-positive) | 2 x 10 ⁹ cells | 6–9 | 8.5–9.0 | 2 x 10 ⁹ cells |
| ARCHAEA | | | | |
| <i>T. kodakarensis</i> | 2 x 10 ⁹ cells | 3–5 | 8.5–9.0 | 2 x 10 ⁹ cells |
| YEAST | | | | |
| <i>S. cerevisiae</i> | 5 x 10 ⁷ cells | 0.5–0.6 | 8.5–9.0 | 5 x 10 ⁷ cells |
| SALIVA/BUCCAL CELLS*** | | | | |
| Saliva (human) | 200 µl | 2–3 | 7.0–8.0 | 500 µl |
| Buccal swab (human) | 1 swab | 5–7 | 6.0–7.0 | 1 swab |

* Tissue gDNA yields are shown for frozen tissue powder, frozen tissue pieces and RNAlater-stabilized tissue pieces. Though frozen tissue powder results in highly-intact gDNA, lower yields can be expected than when using frozen or RNAlater-stabilized tissue pieces. Residual nuclease activity in tissue pieces will cut the gDNA, resulting in a slightly smaller overall size; however, this gDNA is optimal for silica-based purification.

** Human whole blood samples stabilized with various anticoagulants (e.g., EDTA, citrate and heparin) and various counter-ions were evaluated and results were comparable in all cases. Additionally, all indicated blood samples were tested both as fresh and frozen samples, yielding comparable results. Human samples were donated by healthy individuals; yields from unhealthy donors may differ.

*** Buccal swabs and saliva samples partially consist of dead cell material with degraded gDNA. Therefore, the purified gDNA from those samples will naturally have lower DIN values.

Troubleshooting Guide for Genomic DNA Purification using the Monarch Kit

| PROBLEM | CAUSE | SOLUTION |
|--|---|---|
| LOW YIELD | | |
| Cells | Frozen cell pellet was thawed and/or resuspended too abruptly | <ul style="list-style-type: none"> Thaw cell pellets slowly on ice and flick tube several times to release the pellet from bottom of tube. Use cold PBS, and resuspend gently by pipetting up and down 5–10 times until pellet is dissolved |
| | Cell Lysis Buffer was added concurrently with enzymes | <ul style="list-style-type: none"> Add Proteinase K and RNase A to sample and mix well before adding the Cell Lysis Buffer |
| Blood | Blood was thawed, allowing for DNase activity | <ul style="list-style-type: none"> Keep blood samples frozen and add Proteinase K, RNase A and Blood Lysis Buffer directly to the frozen samples |
| | Blood sample is too old | <ul style="list-style-type: none"> Fresh (unfrozen) whole blood should not be older than 1 week. Older samples will show progressive DNA degradation and loss of yield. |
| | Formation of hemoglobin precipitates | <ul style="list-style-type: none"> In blood from species with high hemoglobin content, (e.g., guinea pig) insoluble hemoglobin complexes may accumulate and clog the membrane. Reduce Proteinase K lysis time from 5 to 3 minutes. |
| Tissue | Tissue pieces are too large | <ul style="list-style-type: none"> Cut starting material to the smallest possible pieces or grind with liquid nitrogen. In large tissue pieces, nucleases will destroy the DNA before the Proteinase K can lyse the tissue. |
| | Membrane is clogged with tissue fibers | <ul style="list-style-type: none"> Proteinase K digestion of fibrous tissues (e.g., muscle, heart, skin, ear clips), brain tissue and all RNAlater-stabilized tissues leads to the release of small indigestible protein fibers, which block the binding sites of the silica membrane. To remove fibers, centrifuge lysate at maximum speed for 3 minutes, as indicated in the protocol. For ear clips and brain tissue, use no more than 12–15 mg input material. |
| | Sample was not stored properly | <ul style="list-style-type: none"> Samples stored for long periods of time at room temperature, 4°C or -20°C, will show degradation and loss of gDNA. Flash freeze tissue samples with liquid nitrogen or dry ice and store at -80°C. Alternatively, use stabilizing reagents to protect the gDNA. |
| | Genomic DNA was degraded (common in DNase-rich tissues) | <ul style="list-style-type: none"> Organ tissues (e.g., pancreas, intestine, kidney, liver) contain significant amounts of nucleases. Store properly to prevent DNA degradation. Keep on ice during sample preparation. Refer to the protocol for the recommended amount of starting material and Proteinase K to use. |
| | Column is overloaded with DNA | <ul style="list-style-type: none"> Some organ tissues (e.g., spleen, kidney, liver) are extremely rich in genomic DNA. Using inputs larger than recommended will result in the formation of tangled, long-fragment gDNA that cannot be eluted from the silica membrane. Reduce the amount of input material. |
| | Incorrect amount of Proteinase K added | <ul style="list-style-type: none"> Most samples are digested with 10 µl Proteinase K, but for brain, kidney and ear clips, use 3 µl. |
| DNA DEGRADATION | | |
| Tissue | Tissue samples were not stored properly | <ul style="list-style-type: none"> Samples stored for long periods of time at room temperature, 4°C or -20°C, will show degradation and loss of gDNA. Flash freeze tissue samples with liquid nitrogen or dry ice and store at -80°C. Alternatively, use stabilizing reagents to protect the gDNA. |
| | Tissue pieces are too large | <ul style="list-style-type: none"> Cut starting material to the smallest possible pieces or grind with liquid nitrogen. In large tissue pieces, nucleases will degrade the DNA before Proteinase K can lyse the tissue. |
| | High DNase content of soft organ tissue | <ul style="list-style-type: none"> Organ tissues (e.g., pancreas, intestine, kidney, liver) contain significant amounts of nucleases. Store properly to prevent DNA degradation. Keep on ice during sample preparation. Refer to the protocol for the recommended amount of starting material and Proteinase K to use. |
| Blood | Blood sample is too old | <ul style="list-style-type: none"> Fresh (unfrozen) whole blood should not be older than 1 week. Older samples will show progressive DNA degradation and loss of yield. |
| | Blood was thawed, allowing for DNase activity | <ul style="list-style-type: none"> Keep frozen blood samples frozen and add enzymes and lysis buffer directly to the frozen samples |
| SALT CONTAMINATION | | |
| | Guanidine thiocyanate salt from the binding buffer was carried over into the eluate | <ul style="list-style-type: none"> When transferring the lysate/binding buffer mix, avoid touching the upper column area with the pipet tip and always pipet carefully onto the silica membrane. Avoid transferring any foam that may have been present in the lysate; foam can enter into the cap area of the spin column. Close the caps gently to avoid splashing the mixture into the upper column area and move the samples with care in and out of the centrifuge. If salt contamination is a concern, invert the columns a few times (or vortex briefly) with gDNA Wash Buffer as indicated in the protocol. |
| PROTEIN CONTAMINATION | | |
| Tissue | Incomplete digestion | <ul style="list-style-type: none"> Cut samples to the smallest possible pieces. Incubate sample in the lysis buffer for an extra 30 minutes to 3 hours to degrade any remaining protein complexes. |
| | Membrane is clogged with tissue fibers | <ul style="list-style-type: none"> Proteinase K digestion of fibrous tissues (e.g., muscle, heart, skin, ear clips), brain tissue and all RNAlater-stabilized tissues leads to the release of small, indigestible protein fibers, which block the binding sites of the silica membrane. To remove fibers, centrifuge the lysate at maximum speed for 3 minutes as indicated in the protocol. For ear clips and brain tissue, use no more than 12–15 mg input material. |
| Blood | High hemoglobin content | <ul style="list-style-type: none"> Some blood samples (e.g., horse) are rich in hemoglobin, evidenced by their dark red color. Extend lysis time by 3–5 minutes for best purity results. |
| | Formation of hemoglobin precipitates | <ul style="list-style-type: none"> In blood from species with high hemoglobin content, (e.g., guinea pig) insoluble hemoglobin complexes may accumulate and clog the membrane. Reduce Proteinase K lysis time from 5 to 3 minutes. |
| RNA CONTAMINATION | | |
| Tissue | Too much input material | <ul style="list-style-type: none"> DNA-rich tissues (e.g., spleen, liver and kidney) will become very viscous during lysis and may inhibit RNase A activity. Do not use more than the recommended input amount. |
| | Lysis time was insufficient | <ul style="list-style-type: none"> Extend lysis time by 30 minutes to 3 hours after the tissue piece has completely dissolved |
| TISSUE DIGESTION TAKES TOO LONG | | |
| | Tissue pieces too large | <ul style="list-style-type: none"> Cut tissue pieces to the smallest possible size or grind with liquid nitrogen before starting lysis |
| | Tissue pieces are stuck to bottom of tube | <ul style="list-style-type: none"> Vortex to release pieces from the tube bottom, and immediately after adding Proteinase K and Tissue Lysis Buffer |
| | Too much starting material | <ul style="list-style-type: none"> Use recommended input amount |
| TISSUE LYSATE APPEARS TURBID | | |
| | Formation of indigestible fibers | <ul style="list-style-type: none"> Proteinase K digestion of fibrous tissues (e.g., muscle, heart, skin, ear clips), brain tissue and all RNAlater-stabilized tissues leads to the release of small indigestible protein fibers, which block the binding sites of the silica membrane. To remove fibers, centrifuge lysate at maximum speed for 3 minutes, as indicated in the protocol. For ear clips and brain tissue, use no more than 12–15 mg input material. |
| RATIO $A_{260}/A_{230} > 2.5$ | | |
| | Slight variations in EDTA concentration in eluates | <ul style="list-style-type: none"> EDTA in elution buffer may complex with cations like Mg^{2+} and Ca^{2+} samples present in genomic DNA, which may lead to higher than usual A_{260}/A_{230} ratio. In some cases, this ratio exceeds a value of 3.0 and is consistent with highly pure samples. In these cases, the elevated value does not have any negative effect on downstream applications. |

Monarch Total RNA Miniprep Kit

The Monarch Total RNA Miniprep Kit is a comprehensive solution for sample preservation, cell lysis, gDNA removal, and purification of total RNA from a wide variety of biological samples, including cultured cells, blood, and mammalian tissues. Additionally, tough-to-lyse samples, such as bacteria, yeast, and plant, can be processed with additional steps that enhance lysis. Cleanup of enzymatic reactions or purification of RNA from TRIZOL[®]-extracted samples is also possible using this kit. Purified RNA has high quality metrics, including $A_{260/280}$ and $A_{260/230}$ ratios ≥ 1.8 , high RIN scores, and minimal residual gDNA. Captured RNA ranges in size from full-length rRNAs down to intact miRNAs. Additionally, differential binding conditions allow selective capture or exclusion of the sub-200 nucleotide RNA pool that includes miRNA, 5S rRNA, and tRNA. Purified RNA is suitable for downstream applications, such as RT-qPCR, cDNA synthesis, RNA-seq, Northern blot analysis, etc.

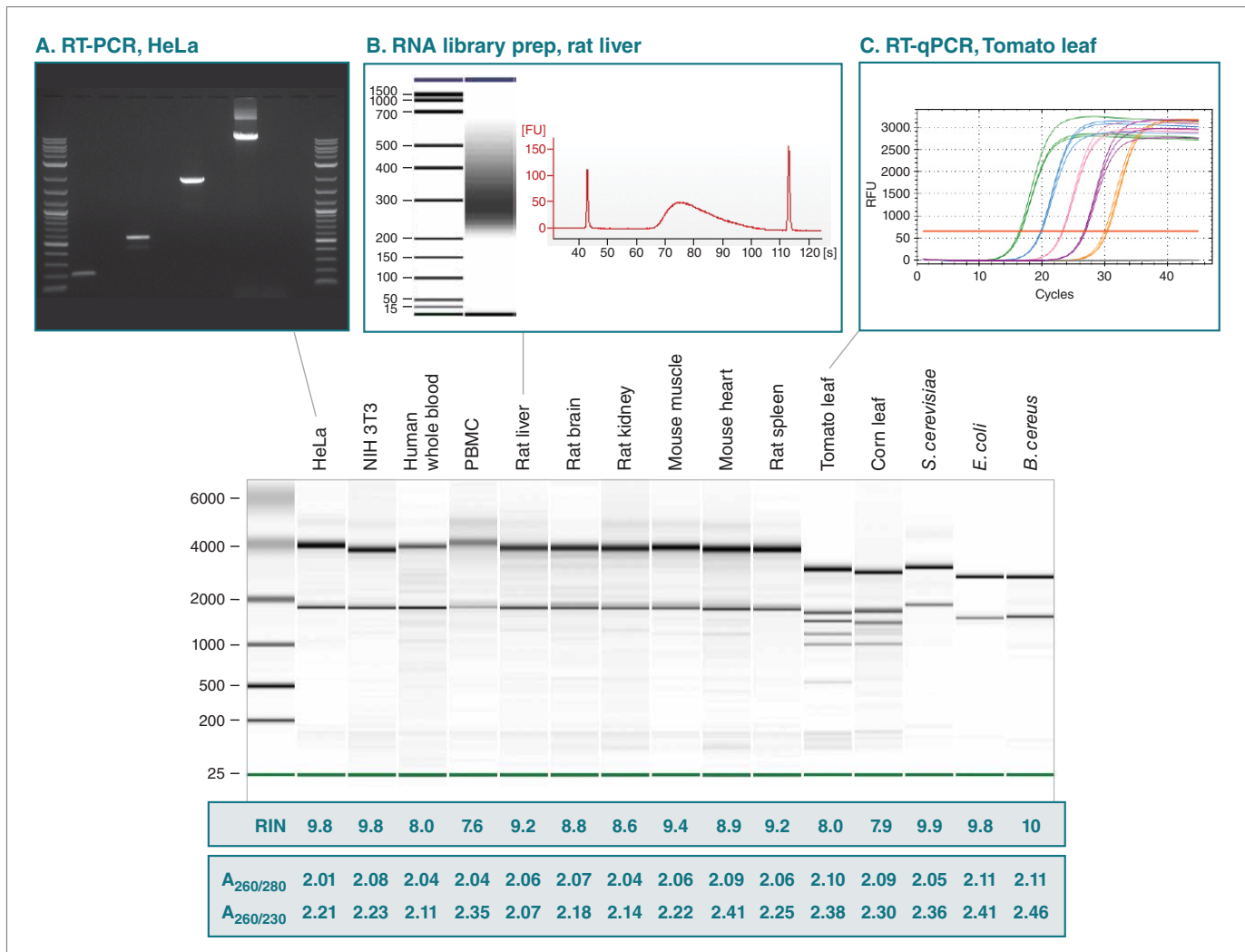


The Monarch Total Miniprep Kit offers better yield and quality; easy protocol and good and consistent results among samples.

— Gisele, Research Associate, Mississippi State University

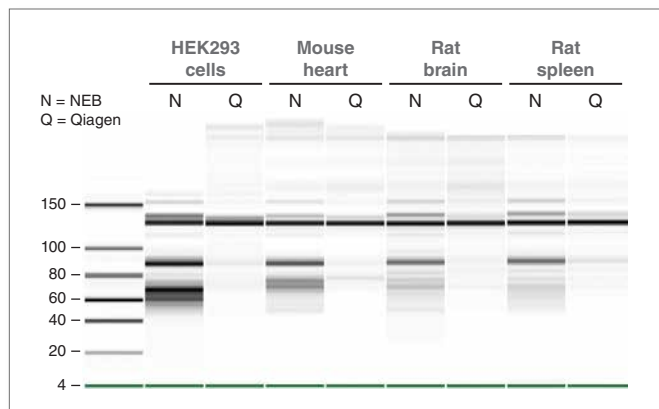
See page 10 for a list of validated sample types.

Monarch-purified RNA is high-quality and compatible with a wide variety of downstream applications



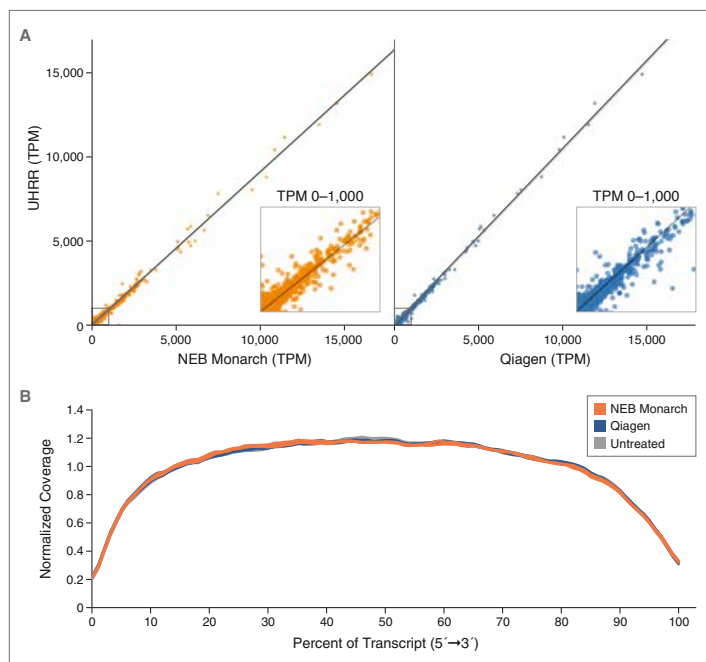
Total RNA from a broad array of sample types was purified using the Monarch Total RNA Miniprep Kit (NEB #T2010). Aliquots were run on an Agilent[®] Bioanalyzer[®] 2100 using the Nano 6000 RNA chip (*S. cerevisiae* RNA was run using a plant Nano assay). RIN values and O.D. ratios confirm the overall integrity and purity of the RNA. To demonstrate compatibility with downstream applications, samples were subsequently used for RT-PCR (+/- RT) (A) for detection of 4 different RNA species using ProtoScript[®] II Reverse Transcriptase (NEB #M0368)/LongAmp[®] Taq DNA Polymerase (NEB #M0323), NGS library prep (B) using NEBNext[®] Ultra[™] II RNA Library Prep Kit (NEB #E7760) and RT-qPCR (C) using Luna[™] One-Step RT-qPCR Reagents (NEB #E3005).

The Monarch Total RNA Miniprep Kit successfully purifies small RNAs below 200 nucleotides, enabling a more accurate representation of the total RNA pool



RNA preps were performed on HEK293 cells, mouse heart, rat brain, or rat spleen using the Monarch Total RNA Miniprep Kit (N) (NEB #T2010) and the RNeasy® Mini Kit from Qiagen (Q). Equivalent amounts were resolved on a Bioanalyzer 2100 using the Small RNA chip. Monarch-purified RNA contains significantly more RNA in the sub-200 nucleotide pool.

Monarch-purified RNA can be used to prepare high quality RNA-seq libraries for gene expression analysis



Transcript levels in Universal Human Reference RNA (UHRR, Agilent) are compared before and after re-purification using either Qiagen RNeasy® or the Monarch Total RNA Miniprep Kit. Strong correlation with untreated UHRR is observed for both methods (Pearson $R > 0.99$ for both samples). All samples display consistent end-to-end coverage of transcripts indicating an absence of detectable degradation during purification. Poly-A selected RNA was selected from 100 ng of untreated, Qiagen and Monarch samples using the NEBNext Poly(A) mRNA Magnetic Isolation Module (NEB #E7490). RNA-seq libraries were then prepared using the NEBNext Ultra II Directional RNA Library Prep Kit for Illumina® (NEB #E7760) before sequencing on a MiSeq® instrument (2 x 150). 1.6 M reads were randomly sampled from each library and adapter trimmed (Seqprep v1.1). Levels of all Gencode v26 transcripts were assessed using Salmon (0.4) and plotted above (panel A). Average 5'-3' Coverage of Gencode v26 transcripts (assessed by Picard's CollectRnaSeqMetrics 1.56 after mapping to the GRCh38 reference genome with Hisat v2.0.3 and marking duplicates with Picard's MarkDuplicates 1.56) is shown below (panel B).

ADVANTAGES

- Use with a wide variety of sample types
- Purify RNA of all sizes, including miRNA & small RNAs > 20 nucleotides
- Includes DNase I, gDNA removal columns, Proteinase K, and a stabilization reagent
- Protocols available for RNA fractionation and RNA cleanup
- Save money with value pricing for an all-in-one kit

SPECIFICATIONS

- **Binding Capacity:** 100 µg RNA
- **RNA Size:** ≥ 20 nt
- **Purity:** $A_{260/280}$ and $A_{260/230}$ usually ≥ 1.8
- **Input Amount:** up to 10^7 cells or 50 mg tissue*
- **Elution Volume:** 30–100 µl
- **Yield:** varies depending on sample type
- **Compatible downstream applications:** RNA Library prep for NGS, RT-PCR, RT-qPCR, Northern blots

*See page 10 for more details and other sample types

| Kit Component | Monarch RNA Purification Kit | Qiagen RNeasy Kits | | |
|------------------------|------------------------------|--------------------|--------------|-----------|
| | | Mini | Protect Mini | Plus Mini |
| gDNA Removal Columns | ✓ | ✗* | ✗* | ✓ |
| DNase I | ✓ | ✗ | ✗ | ✗ |
| Proteinase K | ✓ | ✗ | ✗ | ✗ |
| RNA Protection Reagent | ✓ | ✗ | ✓ | ✗ |

✓ = Included

*Not included and not sold separately



TIPS FOR SUCCESSFUL RNA EXTRACTIONS

- 1. Prevent RNase Activity:** Nucleases in your sample will degrade RNA, so inhibiting their activity is essential. Process samples quickly after harvest, use preservation reagents, and always ensure you are working in nuclease-free working environments.
- 2. Inactivate RNases after harvesting your sample:** Nucleases in your sample will lead to degradation, so inactivating them is essential. Process samples quickly, or use preservation reagents, and always ensure nuclease-free working environments.
- 3. Do not exceed recommended input amounts:** Buffer volumes are optimized for the recommended input amounts. Exceeding these can result in inefficient lysis and can also clog the column. See page 10.
- 4. Ensure samples are properly homogenized/disrupted:** Samples should be disrupted and homogenized completely to release all RNA.
- 5. For sensitive applications, ensure proper gDNA removal:** gDNA is removed by the gDNA removal column and subsequent on-column DNase I treatment. Off-column DNase I treatment can also be employed.

Sample Inputs & Expected Recovery for the Monarch Total RNA Miniprep Kit

RNA yield, purity and integrity vary immensely based on sample type, input amount and sample condition. Empirical yield, purity and RIN data from a wide variety of sample types are provided below, as well as guidance on the maximum input amounts. It is important NOT to overload the column when extracting and purifying RNA, as yields, purity and integrity may suffer. Visit www.neb.com/MonarchRNAinputs for updates and additional validated sample types.

| SAMPLE TYPE ⁽¹⁾ | | INPUT | AVERAGE YIELD (µg) | OBSERVED RIN | MAXIMUM STARTING MATERIAL |
|---|--|---------------------------|--------------------|--------------|---------------------------|
| CULTURED MAMMALIAN CELLS | | | | | |
| HeLa | | 1 x 10 ⁶ cells | 12–15 | 9–10 | 1 x 10 ⁷ cells |
| HEK 293 | | 1 x 10 ⁶ cells | 12–14 | 9–10 | 1 x 10 ⁷ cells |
| NIH3T3 | | 1 x 10 ⁶ cells | 8–12 | 9–10 | 1 x 10 ⁷ cells |
| MAMMALIAN BLOOD ⁽²⁾ | | | | | |
| Human | Fresh | 200 µl | 0.5–1.0 | 7–8 | 3 ml |
| | Frozen | 200 µl | 0.5–1.0 | 7–8 | 3 ml |
| | Stabilized | 200 µl | 0.5–1.0 | 7–8 | 3 ml |
| Rat | Frozen | 100 µl | 5.6 | 9 | 1 ml* |
| BLOOD CELLS | | | | | |
| PBMC (isolated from 5 ml whole blood) | | 5 ml | 3 | 7 | 1 x 10 ⁷ cells |
| TISSUE | | | | | |
| Rat liver | Frozen pulverized | 10 mg | 25 | 8–9 | 20 mg |
| | Stabilized solid | 10 mg | 50–60 | 8–9 | 20 mg |
| Rat spleen (stabilized solid with bead homogenizer) | | 10 mg | 40–50 | 9 | 20 mg |
| Rat kidney (frozen pulverized) | | 10 mg | 7–10 | 9 | 50 mg |
| Rat brain | Frozen pulverized | 10 mg | 2–3 | 8–9 | 50 mg |
| | Stabilized solid | 10 mg | 0.5–1.5 | 8–9 | 50 mg |
| | Stabilized solid with bead homogenizer | 10 mg | 5–8 | 8–9 | 50 mg |
| Rat muscle (frozen pulverized) | | 10 mg | 2–3 | 8–9 | 50 mg |
| Mouse muscle | Frozen pulverized | 10 mg | 3 | 8–9 | 50 mg |
| | Powder with bead homogenizer | 10 mg | 5 | 7–8 | 50 mg |
| | Stabilized solid with bead homogenizer | 10 mg | 8–10 | 9 | 50 mg |
| Mouse heart (stabilized solid with bead homogenizer) | | 10 mg | 5–6 | 8–9 | 50 mg |
| YEAST | | | | | |
| <i>S. cerevisiae</i> | Frozen with bead homogenizer | 1 x 10 ⁷ cells | 50 | 9–10** | 5 x 10 ⁷ cells |
| | Fresh with Zymolyase [®] | 1 x 10 ⁷ cells | 60 | 9** | 5 x 10 ⁷ cells |
| BACTERIA | | | | | |
| <i>E. coli</i> | Frozen | 1 x 10 ⁹ cells | 5 | 10 | 1 x 10 ⁹ cells |
| | Frozen with bead homogenizer | 1 x 10 ⁹ cells | 10 | 10 | 1 x 10 ⁹ cells |
| | Frozen with lysozyme | 1 x 10 ⁹ cells | 70 | 10 | 1 x 10 ⁹ cells |
| <i>B. cereus</i> | Frozen with lysozyme | 1 x 10 ⁸ cells | 20–30 | 9 | 1 x 10 ⁹ cells |
| | Frozen with bead homogenizer | 1 x 10 ⁸ cells | 8 | 9–10 | 1 x 10 ⁹ cells |
| PLANT | | | | | |
| Corn leaf (frozen pulverized with bead homogenizer) | | 100 mg | 45 | 8 | 100 mg |
| Tomato leaf (frozen pulverized with bead homogenizer) | | 100 mg | 30 | 8 | 100 mg |

(1) RNA for other samples including drosophila, zebrafish embryos/larvae, plasma, serum, saliva, buccal swabs and nucleated blood have been successfully purified with this kit; protocols are available in the product manual online.

(2) Protocol for nucleated blood (e.g., birds, reptiles) is also available.

* Mouse blood also has a maximum input of 1 ml.

** *S. cerevisiae* total RNA was run on an Agilent[®] Nano 6000 Chip using plant assay.

Troubleshooting Guide for Total RNA Extraction & Purification Using the Monarch Kit

| PROBLEM | CAUSE | SOLUTION |
|--|--|---|
| Clogged column | Insufficient sample disruption or homogenization | <ul style="list-style-type: none"> • Increase time of sample digestion or homogenization • Centrifuge sample after Proteinase K digestion or homogenization to pellet debris and use only supernatant for next steps • Use larger volume of DNA/RNA Protection Reagent (NEB #T2011) and/or RNA Lysis Buffer (NEB #T2012) for sample disruption and homogenization. See sample-specific protocols in the product manual or online at www.neb.com/T2010. |
| | Too much sample | <ul style="list-style-type: none"> • Reduce amount of starting material to match kit specifications to ensure buffer amounts are sufficient and column is not overloaded. See Guidelines for Choosing Sample Input Amounts on page 10. |
| Low RNA yield | Incomplete elution | <ul style="list-style-type: none"> • After addition of Nuclease-free Water (NEB #B1500) to column matrix, incubate 5-10 min at room temperature and then centrifuge to elute • Perform a second elution (note: this will dilute sample) |
| | Sample is degraded | <ul style="list-style-type: none"> • Store input sample at -80°C prior to use • Use Monarch DNA/RNA Protection Reagent (NEB #T2011) to maintain RNA integrity during storage |
| | Insufficient disruption or homogenization | <ul style="list-style-type: none"> • Increase time of sample digestion or homogenization • Centrifuge sample after Proteinase K digestion or homogenization to pellet debris and use only supernatant for next steps • Use larger volume of DNA/RNA Reagent (NEB #T2011) and/or RNA Lysis Buffer (NEB #T2012) for sample disruption and homogenization. See sample specific protocol in the product manual or online at www.neb.com/T2010. • For Proteinase K treated samples, doubling Proteinase K (from 5% to 10%) may lead to an increase in RNA yield |
| | Too much sample | <ul style="list-style-type: none"> • Reduce amount of starting material to match kit specifications to ensure buffer amounts are sufficient and column is not overloaded. See Guidelines for Choosing Sample Input Amounts on page 10. |
| RNA degradation | Starting material not handled/stored properly | <ul style="list-style-type: none"> • Store input sample at -80°C prior to use. Degradation of RNA may occur if sample is not flash frozen or protected by a preservation reagent. Use Monarch DNA/RNA Protection Reagent (NEB #T2011) to maintain RNA integrity during storage. |
| | Deviation from the stated protocol may expose RNA to unwanted RNase activities | <ul style="list-style-type: none"> • Refer to the General Guidelines for Working with RNA in the product manual |
| | RNase contamination of eluted materials or kit buffers may have occurred | <ul style="list-style-type: none"> • See General Guidelines for Working with RNA in the product manual for advice on reducing risks of contamination |
| Low OD ratios | Low $A_{260/280}$ values indicate residual protein in the purified sample | <ul style="list-style-type: none"> • Ensure the Proteinase K step was utilized for the recommended time. Ensure samples have no debris prior to addition of ethanol and loading onto RNA Purification Column. |
| | Low $A_{260/230}$ values indicate residual guanidine salts have been carried over during elution | <ul style="list-style-type: none"> • Ensure wash steps are carried out prior to eluting sample. Use care to ensure the tip of the column does not contact the flow-through after the final wash. If unsure, please repeat centrifugation. When reusing collection tubes, blot rim of tube on a Kimwipe prior to reattachment to the column to remove any residual wash buffer. |
| DNA contamination | Genomic DNA not removed by column | <ul style="list-style-type: none"> • Perform optional on-column DNase I treatment to remove unwanted gDNA from lysed sample • Perform in-tube/off-column DNase I treatment to remove gDNA |
| | Too much sample | <ul style="list-style-type: none"> • Reduce amount of starting material to match kit specifications to ensure buffer amounts are sufficient and column is not overloaded. See Guidelines for Choosing Sample Input Amounts on page 10. |
| Low performance of RNA in downstream steps | Salt and/or ethanol carryover has occurred | <ul style="list-style-type: none"> • Use care to ensure the tip of the RNA Purification Column does not contact the flow-through after the final wash. If unsure, please repeat centrifugation. • Be sure to spin the RNA Purification Column for 2 minutes following the final wash with RNA Wash Buffer • When reusing collection tubes, blot rim of tube on a Kimwipe prior to reattachment to the column to remove any residual wash buffer • Add additional wash step and/or extend spin time for final wash |
| Unusual spectrophotometric readings | RNA concentration is too low for spectrophotometric analysis | <ul style="list-style-type: none"> • For more concentrated RNA, elute with 30 μl of nuclease-free water • Increase amount of starting material (within kit specifications). See Guidelines for Choosing Sample Input Amounts on page 10. |
| | Silica fines in eluate | <ul style="list-style-type: none"> • Re-spin eluted samples and pipet aliquot from the top of the liquid to ensure the $A_{260/230}$ is unaffected by possible elution of silica particles |

Monarch Kits for RNA Cleanup

The Monarch RNA Cleanup Kits provide a fast and simple silica column-based solution for cleanup and concentration of RNA after enzymatic reactions (including *in vitro* transcription (IVT), DNase I and Proteinase K treatment, capping, tailing and labeling) as well as after RNA isolation (e.g., TRIzol extraction). Kits are available in three different binding capacities: 10 µg, 50 µg and 500 µg, each containing unique columns designed to prevent buffer retention and ensure no carryover of contaminants.

Monarch Kit Specifications:

| MONARCH RNA CLEANUP KIT | NEB #T2030 (10 µg) | NEB #T2040 (50 µg) | NEB #T2050 (500 µg) |
|---------------------------------------|--|---|--|
| Binding Capacity | 10 µg | 50 µg | 500 µg |
| RNA Size Range | ≥ 25 nt (≥ 15 nt with modified protocol) | | |
| Typical Recovery | 70–100% | | |
| Elution Volume | 6–20 µl | 20–50 µl | 50–100 µl |
| Purity | $A_{260/280} > 1.8$ and $A_{260/230} > 1.8$ | | |
| Protocol Time | 5 minutes of spin and incubation time | | 10–15 minutes of spin and incubation time |
| Common Downstream Applications | RT-PCR, RNA library prep for NGS, small RNA library prep for NGS, RNA labeling | RT-PCR, RNA library prep for NGS, formation of RNP complexes for genome editing, microinjection, RNA labeling, transfection | RT-PCR, RNA library prep for NGS, RNA labeling, RNAi, microinjection, transfection |

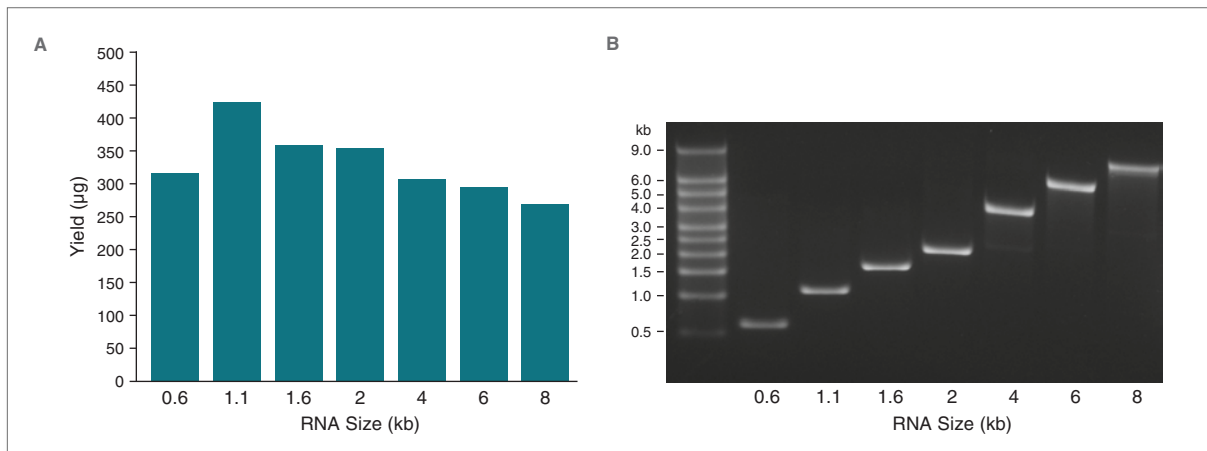
ADVANTAGES

- Isolate highly pure RNA ($A_{260/280}$ and $A_{260/230} \geq 1.8$) in minutes
- Clean up RNA with simple protocol utilizing a single wash buffer
- Elute in as little as 6 µl (NEB #T2030) or 20 µl (NEB #T2040)
- Bind up to 500 µg of RNA (NEB #T2050)
- Adjust cutoff size down to 15 nt with a slight protocol modification

APPLICATIONS

- Cleanup & concentration after enzymatic reactions (e.g., DNase I and Proteinase K treatment)
- Cleanup after RNA synthesis (IVT and sgRNA synthesis)
- Cleanup & concentration of previously-purified RNA (e.g., after TRIzol extraction)
- Fractionation of RNA
- RNA Gel Extraction

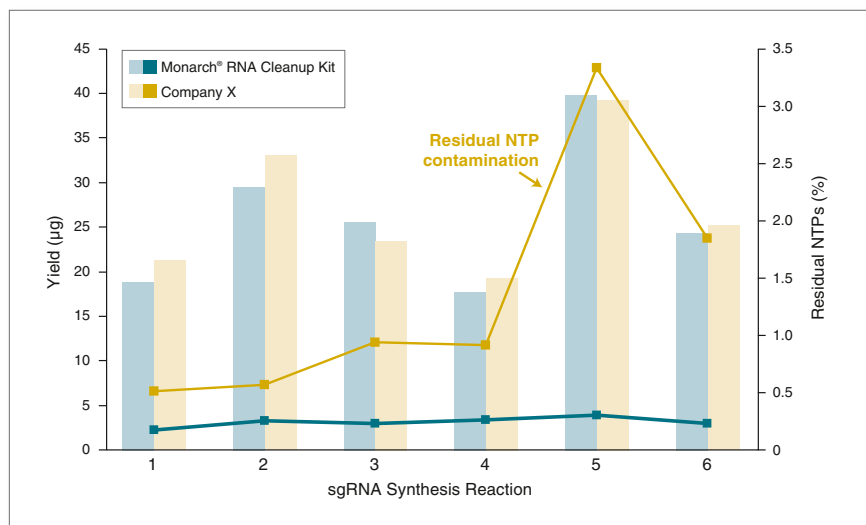
The Monarch RNA Cleanup Kit (500 µg) is suitable for cleaning up large quantities (> 250 µg) of RNA from *in vitro* transcription reactions



A. RNA transcripts of varying sizes (0.6–8 kb) were synthesized using the HiScribe™ T7 Quick High Yield RNA Synthesis Kit (NEB #E2050). 40 µl of each *in vitro* transcription (IVT) reaction was cleaned up using the Monarch RNA Cleanup Kit (500 µg) (NEB #T2050). RNA yields were calculated from the resulting A_{260} measured using a Nanodrop spectrophotometer and ranged from 268–425 µg of RNA per IVT reaction.

B. RNA integrity (200 ng/lane) was assessed on a 1% agarose-TBE gel stained with SYBR® Gold.

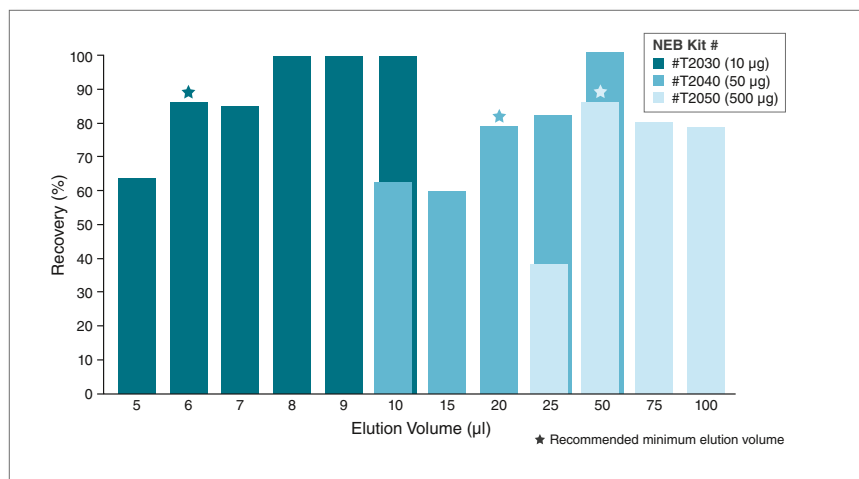
The Monarch RNA Cleanup Kit (50 µg) produces sgRNA yields consistent with other competitor RNA cleanup kits and with lower residual NTP contamination



Six different sgRNA synthesis reactions from the EnGen® sgRNA Synthesis Kit, *S. pyogenes* (NEB #E3322) were cleaned up using either the Monarch RNA Cleanup Kit (50 µg, NEB #T2040) or a competitor kit (according to manufacturer's recommendations) and eluted in 50 µl nuclease-free water. sgRNA yield was calculated from the resulting A_{260} measured using a Trinean DropSense 16. The Monarch RNA Cleanup Kit produced sgRNA yields consistent with other commercially available RNA cleanup kits.

Following cleanup, residual nucleotides (NTPs) were measured by LC-MS and are reported as percent area NTPs (rATP+rCTP+rGTP+rUTP)/percent area sgRNA. The NEB Monarch RNA Cleanup Kit consistently outperforms other commercially available RNA cleanup kits in the removal of residual NTPs from sgRNA synthesis reactions.

Recovery of RNA from Monarch RNA Cleanup Kits with Varying Elution Volumes



10, 50 or 500 µg of RNA (16S and 23S Ribosomal Standard from *E. coli*, Sigma) was purified using a Monarch RNA Cleanup Kit (10 µg, #T2030) (50 µg, #T2040) (500 µg, #T2050). Nuclease-free water was used to elute the RNA. The percent recovery of the RNA was calculated from the resulting A_{260} as measured using a Trinean DropSense 16. ~80% of RNA can be efficiently recovered in 6 µl from the Monarch RNA Cleanup Kit (10 µg, #T2030), 20 µl from the Monarch RNA Cleanup Kit (50 µg, #T2040), and 50 µl from the Monarch RNA Cleanup Kit (500 µg, #T2050).

“ We recently switched to NEB for our spin column kits, and I just wanted to say that I am so impressed with the thoughtfulness of the packaging—how the protocol is stored, the tiny bags that the columns are in, and the quality of the box itself, which we will keep to store items after we finish the kit. We also like that you can customize the elution volume. Cheers to your team for doing your part and designing a great product!

– Jaclyn, George Washington University

Learn more at [NEB.com/MonarchRNACleanup](https://www.neb.com/MonarchRNACleanup)

Troubleshooting Guide for RNA Cleanup

| PROBLEM | CAUSE | SOLUTION |
|---|---|---|
| Low RNA yield | Reagents added incorrectly | <ul style="list-style-type: none"> Check protocol to ensure correct buffer reconstitution, order of addition for buffers and ethanol, and proper handling of column flow-through and eluents |
| | Insufficient mixing of reagents | <ul style="list-style-type: none"> Ensure the ethanol is thoroughly mixed with mixture of RNA sample and RNA Binding Buffer before applying sample to the purification column |
| | Incomplete elution during prep | <ul style="list-style-type: none"> Ensure the nuclease-free water used for elution is delivered directly to the center of the column so that the matrix is completely covered and elution is efficient. Larger elution volumes and longer incubation times can increase yield of RNA off the column at the cost of dilution of the sample and increased processing times. For typical RNA samples, the recommended elution volumes and incubation times should be sufficient. Additionally, multiple rounds of elution can be employed to increase the amount of RNA eluted, at the expense of dilution of the sample. The first elution can be used to elute a second time to maximize recovery and minimize sample dilution. |
| | Complex secondary structure affects binding and elution of smaller RNAs (< 45 nt) | <ul style="list-style-type: none"> Diluting your sample with 2 volumes of ethanol instead of one volume in Step 2. |
| | Poor extraction from Agarose gel | <ul style="list-style-type: none"> Be sure to incubate the sample between 37–55°C after addition of both the RNA Cleanup Binding Buffer and the ethanol. Additionally, incubate the column with nuclease-free water at 65°C for 5 minutes prior to spinning to elute the RNA. |
| Purified RNA is degraded | RNase contamination | <ul style="list-style-type: none"> Wear gloves and use disposable RNase-free tips (not provided) and collection tubes during the procedure Keep all kit components tightly sealed when not in use |
| | Improper storage of RNA | <ul style="list-style-type: none"> Use RNA immediately in downstream applications or store at -70°C |
| Low OD ratios | Residual guanidine salts have been carried over during elution. | <ul style="list-style-type: none"> Ensure wash steps are carried out prior to eluting sample Use care to ensure the tip of the column does not contact the flow-through. If unsure, please repeat centrifugation When reusing collection tubes, blot rim of tube on a Kimwipe prior to reattachment to the column to remove any residual wash buffer |
| Low performance of RNA in downstream steps | Salt and/or ethanol carry-over | <ul style="list-style-type: none"> Use care to ensure that the tip of the column does not come into contact with the flow-through. If in doubt, re-spin for 1 minute to ensure traces of salt and ethanol are not carried over in the eluted RNA |
| DNA contamination | DNA present in sample | <ul style="list-style-type: none"> Incubate RNA sample with DNase I (NEB #M0303) and clean up RNA using the Monarch RNA Cleanup Protocol |

Monarch Microfuge Tube EcoRack

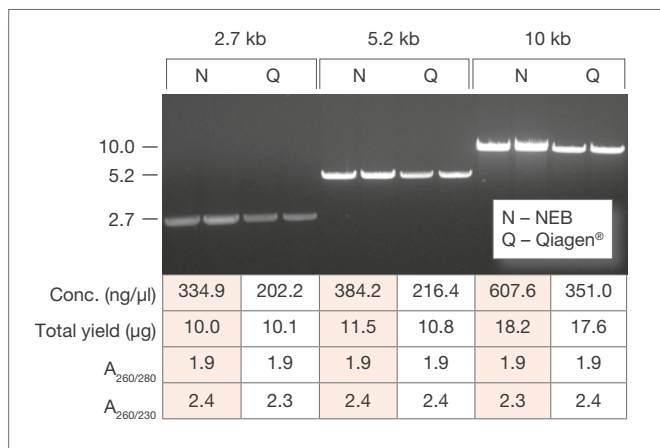
The Monarch Microfuge Tube EcoRack (NEB #T5020) is a bench-top tube rack made from plastic recovered during the manufacture of Monarch nucleic acid purification columns. Plastic that would otherwise be discarded during the injection molding process is recovered and re-molded into this useful lab accessory that can hold up to 48 tubes each side. One side can accommodate tubes 1.5-2 mls and the other can accommodate 0.5 ml tubes.



Monarch Plasmid Miniprep Kit

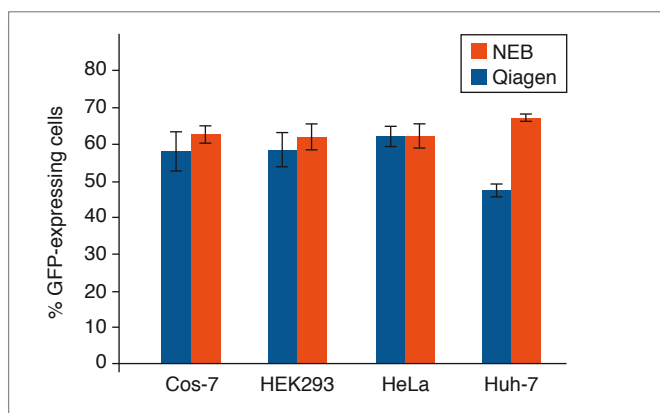
The Monarch Plasmid Miniprep Kit is a rapid and reliable method for the purification of high quality plasmid DNA. This method employs standard cell resuspension, alkaline lysis, and neutralization steps, with the additional benefit of color indicators at certain steps to easily monitor completion. Unique wash buffers ensure salts, proteins, RNA and other cellular components are removed, allowing low-volume elution of concentrated, highly pure DNA. Protocols are fast and user-friendly. Elution in as little as 30 µl provides concentrated DNA for use in downstream applications, such as restriction digests, DNA sequencing, PCR and other enzymatic manipulations.

Monarch Plasmid Miniprep Kits consistently produce more concentrated plasmid DNA with equivalent yield, purity and functionality as compared to the leading supplier



Preps were performed according to recommended protocols using 1.5 ml aliquots of the same overnight culture. One microliter of each prep was digested with HindIII-HF® (NEB #R3104) to linearize the vector and the digests were resolved on a 1% w/v agarose gel.

Plasmid DNA purified using the Monarch Plasmid Miniprep Kit produces transfection efficiencies equivalent to or better than plasmid DNA purified using the Qiagen QIAprep® Spin Miniprep Kit



Plasmid DNA encoding constitutively expressed GFP (pEGFP-C2) was prepared using either Monarch Plasmid Miniprep Kit or Qiagen QIAprep Spin Miniprep Kit. Four different cell lines (Cos-7, HEK293, HeLa, and Huh-7) were grown to 80-90% confluence and transfected with 100 ng of each plasmid, in complex with 0.3 µl Lipofectamine 2000, and 10 µl Opti-MEM. Five replicates for each cell type were performed using both DNA preps. GFP expressing cells were counted by flow cytometry 48 hrs post-transfection with a minimum of 2000 events collected per well. Average percentage of cells expressing GFP from all replicates is graphed and used as a measure of transfection efficiency.

ADVANTAGES

- Elute in low volumes
- Prevent buffer retention and salt carryover with optimized column design
- Reduce hands on time with faster protocols and less spin time
- Monitor completion of certain steps using colored buffer system
- No need to add RNase before starting
- Easily label columns using tab and frosted surfaces

SPECIFICATIONS

- **Culture Volume:** 1–5 ml, not to exceed 15 O.D. units
- **Binding Capacity:** up to 20 µg
- **Plasmid Size:** up to 25 kb
- **Typical Recovery:** up to 20 µg, yield depends on plasmid copy number, host strain, culture volume, and growth conditions
- **Elution Volume:** ≥ 30 µl
- **Purity:** A_{260/280} and A_{260/230} ≥ 1.8
- **Protocol Time:** 10½ minutes of spin and incubation time
- **Compatible Downstream Applications:** restriction digestion and other enzymatic manipulations, transformation, transfection of robust cells, DNA sequencing, PCR, labeling, cell-free protein synthesis, etc.



TIPS FOR SUCCESSFUL MINIPREPS

1. **Don't use too many cells (culture should not exceed 15 O.D. units):** Using the optimal amount of cells increases lysis efficiency and ensures that excess cell debris does not clog the column.
2. **Lyse cells completely:** In order to release all plasmid DNA, ALL of the cells need to be lysed. Resuspend cells completely, and incubate for the recommended time.
3. **Don't vortex cells after lysis:** Vortexing can cause shearing of host chromosomal DNA, resulting in gDNA contamination.
4. **Allow the RNase to do its job:** Do not skip or reduce the incubation with RNase (which is included in the neutralization buffer), otherwise you may observe RNA contamination.
5. **Don't skip any washes:** Proper washes ensure the removal of cell debris, endotoxins and salts.
6. **Heat the elution buffer for large plasmids:** Large DNA binds more tightly; heating the elution buffer helps to more efficiently release the DNA from the column matrix.

Monarch Kits for your DNA cleanup and gel extraction needs

Monarch DNA cleanup kits rapidly and reliably purify up to 5 μg of concentrated, high-quality DNA. These kits utilize a bind/wash/elute workflow with minimal incubation and spin times. The columns provided with each kit ensure zero buffer retention and no carryover of contaminants, enabling elution of sample in volumes as low as 6 μl . Monarch Buffers have been optimized, and do not require monitoring of pH. Eluted DNA is ready for use in restriction digests, DNA sequencing, ligation and other enzymatic manipulations.

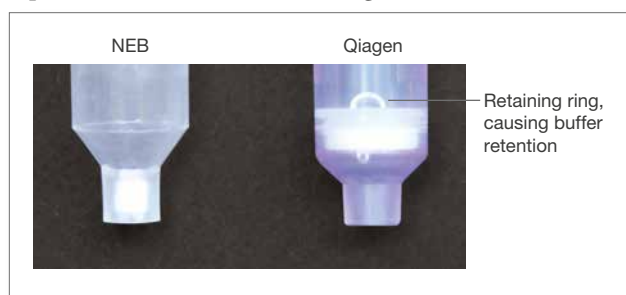
Monarch DNA Gel Extraction Kit

The Monarch DNA Gel Extraction Kit can be used to quickly purify DNA from agarose gels. Unlike other kits, there is no need to add isopropanol to the melted agarose prior to loading on the column, saving you a step. Enjoy high yields and minimal hands on time.

Monarch PCR & DNA Cleanup Kit (5 μg)

The Monarch PCR & DNA Cleanup Kit (5 μg) can be used to purify DNA from a variety of enzymatic reactions, such as PCR, restriction digestion, ligation and reverse transcription. The DNA Wash Buffer provided ensures enzymes, short primers (≤ 25 nt), detergents and other low-molecular weight reaction components (e.g., nucleotides, DMSO, betaine) are removed. A simple protocol modification also enables purification of small DNA and oligonucleotides.

Optimized Monarch column design



Many purification columns are built with a retaining ring to hold the membrane in place, but this can trap buffer. Monarch columns' silica matrix is held in place without the use of a retaining ring, eliminating buffer retention and ensuring worry-free purification.

“ This is a great, easy-to-use, small footprint kit... it was great to elute in such a small volume while feeling confident that the elution buffer managed to get to all of the surface area of the membrane.

– Michelle, Principal Investigator, Central Michigan University

ADVANTAGES

- Elute in as little as 6 μl
- Prevent buffer retention and salt carryover with optimized column design
- Purify oligos and other small DNA fragments with simple protocol modification
- Save time with fast, user-friendly protocols
- Designed with sustainability in mind

SPECIFICATIONS

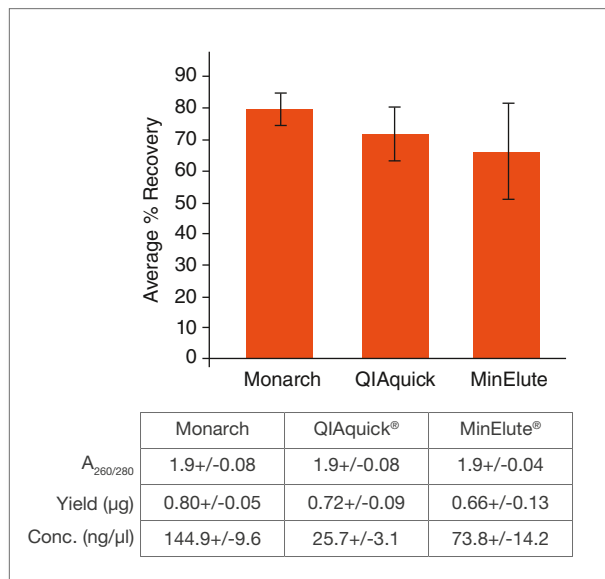
- **Binding Capacity:** up to 5 μg
- **DNA Size Range:** \sim 50 bp to 25 kb
With protocol modification, oligos ≥ 15 bp (dsDNA) or ≥ 18 nt (ssDNA) can be purified with NEB #T1030
- **Typical Recovery:** DNA (50 bp to 10 kb): 70–90%
DNA (11–25 kb): 50–70%
ssDNA ≥ 18 nt and dsDNA ≥ 15 bp: 70–85% (NEB #T1030 only)
- **Elution Volume:** ≥ 6 μl
- **Purity:** $A_{260/280} \geq 1.8$
- **Protocol Time:**
Gel Extraction: 10 min of spin and incubation time
PCR & DNA Cleanup: 5 min of spin and incubation time
- **Compatible Downstream Applications:** ligation, restriction digestion, labeling and other enzymatic manipulations, library construction and DNA sequencing



TIPS FOR SUCCESSFUL GEL EXTRACTIONS

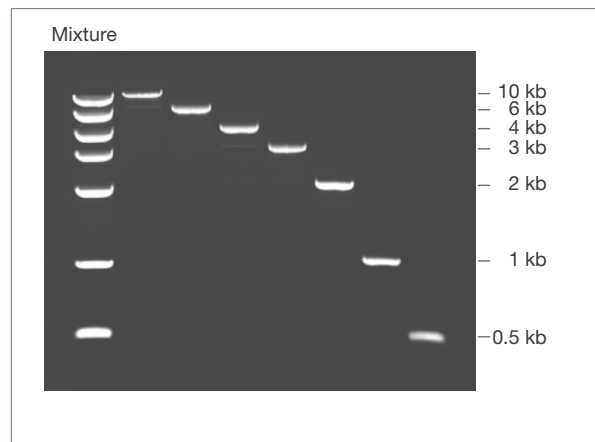
1. **Use the smallest possible agarose plug:** The less agarose in solution, the more efficient the extraction will be. More agarose means more melting time and more buffer needed to dissolve it (introducing more salts which can co-elute with your sample). If the plug is greater than 160 mg, the volume of agarose plus buffer will exceed that of the column reservoir (800 μl), and will require that your sample be loaded onto the column in two steps.
2. **Minimize exposure to UV light:** Excise the gel slice as quickly as possible, as exposure to UV light damages DNA. As long as the excision is done quickly, damage will be negligible.
3. **Melt the agarose completely:** If the agarose is not completely melted, DNA remains trapped inside and cannot be extracted properly.
4. **Heat the elution buffer for large DNA fragments:** Large DNA binds more tightly; heating the elution buffer helps to more efficiently release the DNA from the column matrix.

DNA purified from the Monarch DNA Gel Extraction Kit is recovered with similar efficiency and purity as the leading supplier, but is more highly concentrated, facilitating its use in downstream applications



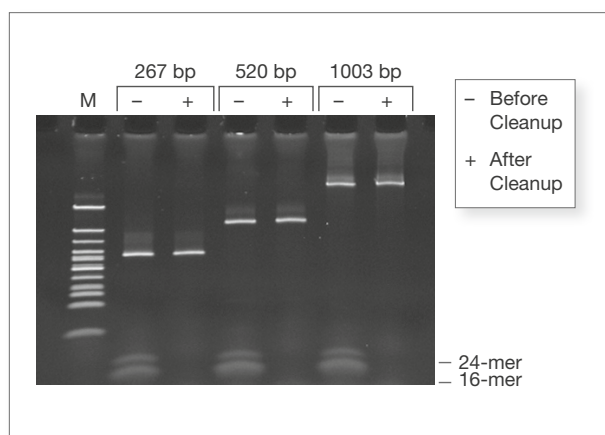
One microgram aliquots of a 3 kb fragment were resolved on a 1% w/v agarose gel, excised, and processed with different kits using manufacturer-specified minimum elution volumes. Values reported are the concentration and purity data determined by Nanodrop™ readings, as well as recovery calculations based on the eluted DNA concentration and recovered volume.

Monarch DNA Gel Extraction Kit reproducibly recovers DNA over a broad range of molecular weights



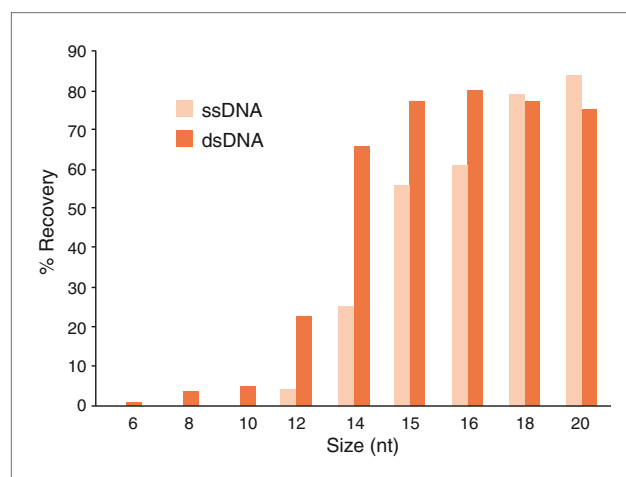
A mixture of 7 DNA fragments ranging from 10 kb to 0.5 kb was prepared and one-half of the mixture was resolved on a 1% w/v agarose gel. Each fragment was manually excised from the agarose gel and processed using the Monarch DNA Gel Extraction Kit. The entire elution of each fragment was resolved on a new gel with the remainder of the original mixture for comparison.

Monarch PCR & DNA Cleanup Kit (5 µg) removes low molecular weight primers from dsDNA samples.



Three independent amplicons (267 bp, 520 bp, 1003 bp) were spiked with two oligonucleotides (16-mer, 24-mer) to a final concentration of 1 µM. Half of each mix was purified with the Monarch PCR & DNA Cleanup Kit (5 µg) following the included protocol. Equivalent fractions of the original mixture and the eluted material were resolved on a 20% TBE acrylamide gel at 100V for one hour and stained with SYBR Green II.

With simple protocol modification, the Monarch PCR & DNA Cleanup Kit can efficiently recover ssDNA and dsDNA oligonucleotides (1 µg), expanding the utility of the kit



Synthesized ssDNA and dsDNA oligonucleotides (1 µg in 50 µl H₂O) of varying lengths (6-20 nt) were purified using the oligonucleotide cleanup protocol and the Monarch PCR & DNA Cleanup Kit (NEB #T1030), and were eluted in 50 µl water. The average percent recovery (n=3) of the oligonucleotides was calculated from the resulting A₂₆₀ as measured using a Trinean® DropSense™ 16. Use of the Oligonucleotide Cleanup Protocol and the Monarch PCR & DNA Cleanup Kit (NEB #T1030) results in the efficient removal of small oligonucleotides (6-12 nt) and >70% recovery and cleanup of oligonucleotides ≥ 15 bp (dsDNA) or ≥ 18 nt (ssDNA).

Troubleshooting Guide for DNA Cleanup & Plasmid Purification using Monarch Kits

| PROBLEM | PRODUCT | POSSIBLE CAUSE | SOLUTION |
|----------------------|---|--|--|
| No DNA purified | Monarch Plasmid Miniprep Kit (NEB #T1010) | Buffers added incorrectly | <ul style="list-style-type: none"> Add buffers in the correct order so that the sample is bound, washed and eluted in the correct sequence Ensure ethanol was added to Plasmid Wash Buffer 2 |
| | | Plasmid loss during culture growth | <ul style="list-style-type: none"> Ensure proper antibiotic and concentration was used to maintain selection during culture growth |
| | Monarch DNA Gel Extraction Kit (NEB #T1020) | Ethanol not added to wash buffer | <ul style="list-style-type: none"> Ensure the proper amount of ethanol was added to Monarch DNA Wash Buffer |
| | Monarch PCR & DNA Cleanup Kit (5 µg) (NEB #T1030) | | |
| Low DNA yield | Monarch Plasmid Miniprep Kit (NEB #T1010) | Incomplete lysis | <ul style="list-style-type: none"> Pellet must be completely resuspended before addition of Plasmid Lysis Buffer (B2) – color should change from light to dark pink Avoid using too many cells; this can overload the column. If culture volume is larger than recommended, scale up buffers B1-B3 or consider using two columns. |
| | | Too many cells used | <ul style="list-style-type: none"> The amount of cells used should not exceed 15 O.D. units |
| | | Plasmid loss during culture growth | <ul style="list-style-type: none"> Ensure proper antibiotic and concentration was used to maintain selection during culture growth |
| | | Low-copy plasmid selected | <ul style="list-style-type: none"> Increase amount of cells processed and scale buffers accordingly |
| | | Lysis of cells during growth | <ul style="list-style-type: none"> Harvest culture during transition from logarithmic growth to stationary phase (-12-16 hours) |
| | | Incomplete neutralization | <ul style="list-style-type: none"> Invert tube several times until color changes to a uniform yellow color |
| | | Incomplete elution | <ul style="list-style-type: none"> Deliver Elution Buffer directly to center of column Larger elution volumes and longer incubation times can increase yield For elution of plasmids > 10 kb, heat the DNA Elution Buffer to 50°C and extend incubation time to 5 minutes |
| | Monarch DNA Gel Extraction Kit (NEB #T1020) | Buffers added incorrectly | <ul style="list-style-type: none"> Be sure that buffers have been reconstituted correctly and that reagents have been added in the correct order |
| | | Gel slice not fully dissolved | <ul style="list-style-type: none"> Undissolved agarose may clog the column and interfere with binding. Incubate in Monarch Gel Dissolving Buffer for proper time and temperature. |
| | | Gel dissolved above 60°C | <ul style="list-style-type: none"> Dissolve gel slice in specified range (37-55°C). Higher temperatures can denature DNA |
| | | Incomplete elution during preparation | <ul style="list-style-type: none"> Deliver Elution Buffer directly to center of column Larger elution volumes and longer incubation times can increase yield For elution of DNA > 10 kb, heat the Elution Buffer to 50°C and extend incubation time to 5 minutes Multiple rounds of elution can also be performed |
| | Monarch PCR & DNA Cleanup Kit (5 µg) (NEB #T1030) | Buffers added incorrectly | <ul style="list-style-type: none"> Be sure that buffers have been reconstituted correctly and that reagents have been added in the correct order |
| | | Incomplete elution during preparation | <ul style="list-style-type: none"> Deliver Elution Buffer directly to center of column Larger elution volumes and longer incubation times can increase yield For elution of DNA > 10 kb, heat the Elution Buffer to 50°C and extend incubation time to 5 minutes Multiple rounds of elution can also be performed |
| | Low DNA quality | Monarch Plasmid Miniprep Kit (NEB #T1010) | Plasmid degradation |
| Plasmid is denatured | | | <ul style="list-style-type: none"> Limit incubation with Plasmid Lysis Buffer (B2) to two minutes, as NaOH in the buffer can denature the plasmid |
| gDNA contamination | | | <ul style="list-style-type: none"> Use careful inversion mixing after cell lysis to avoid shearing of host cell chromosomal DNA. Do not vortex. |
| RNA contamination | | | <ul style="list-style-type: none"> Incubate sample in neutralization buffer for the full 2 minutes. For cell culture volumes > 3 ml, increase the spin after neutralization to 5 minutes. |
| Improper storage | | | <ul style="list-style-type: none"> Elute DNA in DNA Elution Buffer or nuclease-free water, and store at -20°C. Do not store in solutions containing magnesium. |
| Low DNA purity | Monarch Plasmid Miniprep Kit (NEB #T1010) | Ethanol has been carried over | <ul style="list-style-type: none"> Centrifuge final wash for 1 minute to ensure complete removal Ensure column tip does not come in contact with flow through |
| | | Excessive salt in sample | <ul style="list-style-type: none"> Use both plasmid wash buffers and do not skip wash steps |
| | | Excessive carbohydrate has been carried over | <ul style="list-style-type: none"> Avoid strains with high amounts of endogenous carbohydrate (e.g., HB101 and JM 100 series). Be sure to follow protocol and include Plasmid Wash Buffer 1 step. |
| | Monarch DNA Gel Extraction Kit (NEB #T1020) | Guanidine carryover from Gel Dissolving Buffer | <ul style="list-style-type: none"> Use smaller agarose plugs, which will require less Gel Dissolving Buffer |
| | | Ethanol has been carried over | <ul style="list-style-type: none"> Centrifuge final wash for 1 minute to ensure complete removal Ensure column tip does not come in contact with flow through |
| | | Trace amounts of salts have been carried over | <ul style="list-style-type: none"> Ensure column tip does not come in contact with new tube for elution |
| | Monarch PCR & DNA Cleanup Kit (5 µg) (NEB #T1030) | Ethanol has been carried over | <ul style="list-style-type: none"> Centrifuge final wash for 1 minute to ensure complete removal Ensure column tip does not come in contact with flow through |
| | | Trace amounts of salts have been carried over | <ul style="list-style-type: none"> Ensure column tip does not come in contact with new tube |

Ordering Information

| GENOMIC DNA PURIFICATION KIT | NEB # | SIZE |
|--|----------|-----------------------|
| Monarch Genomic DNA Purification Kit | T3010S/L | 50/150 preps |
| COLUMNS AVAILABLE SEPARATELY | | |
| Monarch gDNA Purification Columns | T3017L | 100 columns and tubes |
| Monarch Collection Tubes II | T2018L | 100 tubes |
| BUFFERS & REAGENTS AVAILABLE SEPARATELY | | |
| Monarch gDNA Tissue Lysis Buffer | T3011L | 34 ml |
| Monarch gDNA Cell Lysis Buffer | T3012L | 20 ml |
| Monarch gDNA Blood Lysis Buffer | T3013L | 20 ml |
| Monarch gDNA Binding Buffer | T3014L | 65 ml |
| Monarch gDNA Wash Buffer | T3015L | 60 ml |
| Monarch gDNA Elution Buffer | T3016L | 34 ml |
| Monarch RNase A | T3018L | 1 ml |
| Proteinase K, Molecular Biology | P8107S | 2 ml |

| RNA PURIFICATION KITS | NEB # | SIZE |
|---|----------|-----------------------|
| Monarch Total RNA Miniprep Kit | T2010S | 50 preps |
| Monarch RNA Cleanup Kit (10 µg) | T2030S/L | 10/100 preps |
| Monarch RNA Cleanup Kit (50 µg) | T2040S/L | 10/100 preps |
| Monarch RNA Cleanup Kit (500 µg) | T2050S/L | 10/100 preps |
| COLUMNS AVAILABLE SEPARATELY | | |
| Monarch RNA Purification Columns | T2007L | 100 columns and tubes |
| Monarch gDNA Removal Columns | T2017L | 100 columns and tubes |
| Monarch Collection Tubes II | T2018L | 100 tubes |
| Monarch RNA Cleanup Columns (10 µg) | T2037L | 100 columns and tubes |
| Monarch RNA Cleanup Columns (50 µg) | T2047L | 100 columns and tubes |
| Monarch RNA Cleanup Columns (500 µg) | T2057L | 100 columns and tubes |
| BUFFERS & REAGENTS AVAILABLE SEPARATELY | | |
| Monarch DNA/RNA Protection Reagent | T2011L | 56 ml |
| Monarch RNA Lysis Buffer | T2012L | 100 ml |
| Monarch Total RNA Miniprep Enzyme Pack (contains DNase I, Prot K, and associated buffers) | T2019L | 1 pack |
| Monarch RNA Priming Buffer | T2013L | 56 ml |
| Monarch RNA Wash Buffer | T2014L | 50 ml |
| Monarch RNA Cleanup Binding Buffer | T2041L | 80 ml |
| Monarch RNA Cleanup Wash Buffer | T2042L | 40 ml |
| Nuclease-free Water | B1500S/L | 25 ml/100 ml |

| DNA CLEANUP AND PLASMID PURIFICATION KITS | NEB # | SIZE |
|--|----------|-----------------------|
| Monarch DNA Gel Extraction Kit | T1020S/L | 50/250 preps |
| Monarch PCR & DNA Cleanup Kit (5 µg) | T1030S/L | 50/250 preps |
| Monarch Plasmid Miniprep Kit | T1010S/L | 50/250 preps |
| COLUMNS AVAILABLE SEPARATELY | | |
| Monarch DNA Cleanup Columns (5 µg) | T1034L | 100 columns and tubes |
| Monarch Plasmid Miniprep Columns | T1017L | 100 columns and tubes |
| BUFFERS AVAILABLE SEPARATELY | | |
| Monarch DNA Cleanup Binding Buffer | T1031L | 235 ml |
| Monarch DNA Wash Buffer | T1032L | 25 ml |
| Monarch DNA Elution Buffer | T1016L | 25 ml |
| Monarch Gel Dissolving Buffer | T1021L | 235 ml |
| Monarch Plasmid Lysis Buffer (B2) | T1012L | 2 x 27 ml |
| Monarch Plasmid Neutralization Buffer (B3) | T1013L | 110 ml |
| Monarch Plasmid Resuspension Buffer (B1) | T1011L | 55 ml |
| Monarch Plasmid Wash Buffer 1 | T1014L | 2 x 27 ml |
| Monarch Plasmid Wash Buffer 2 | T1015L | 30 ml |

| ACCESSORIES | NEB # | SIZE |
|--------------------------------|--------|---------|
| Monarch Microfuge Tube EcoRack | T5020S | 2 racks |

Your local NEB distributor:

BeNeLux:

BIOKÉ
Tel: (+31) 71 722 0220
(BE: 0800 - 71640)
Fax: (+31) 71 891 0019
info@bioke.com
www.bioke.com

BULGARIA

ELTA 90M Ltd.
Tel: (+359) 2 983 96 49
Fax: (+359) 2 9832211
office@elta90.eu
www.elta90.com

CROATIA:

DIAGNOSTICA SKALPELI D.O.O.
Free call: 800-315911
Tel: (+385) 1 377 8484
Fax: (+385) 1 377 8585
skalpel@skalpeli.hr
www.skalpeli.hr

CZECH REPUBLIC: BIOTECH A.S.

Tel: (Toll Free) 0800 124683
Fax: 02 72701742
info@ibiotech.cz
www.ibiotech.cz

DENMARK:

BioNordika Denmark A/S
DENMARK
Tel: (39) 56 20 00
Fax: (39) 56 19 42
info@bionordika.dk
www.bionordika.dk

FINLAND:

BioNordika Oy
Tel: (+358) 207 410 270
info@bionordika.fi
www.bionordika.fi

GREECE:

BIOLINE SCIENTIFIC
Tel: (0030) 210 522 6547
Fax: (0030) 210 524 4744
info@bioline.gr
www.bioline.gr

HUNGARY:

KVALITEX SCIENTIFIC
Phone: (1) 340 4700
Fax: (1) 339 8274
info@kvalitex.hu
www.kvalitex.hu

ITALY:

EUROCLONE S.P.A.
Free call: 800-315911
Tel: +39 02 38195.1
Fax: +39 02 3810145
info@euroclone.it
www.euroclonegroup.it

ISRAEL:

ORNAT LTD.
Tel: (+972) 8 947 7077
Fax: (+972) 8 936 3034
ornatbio@ornat.co.il
www.ornat.co.il

NORWAY:

BioNordika AS
Tel +47 23 03 58 00
Fax +47 23 03 58 01
info@bionordika.no
www.bionordika.no

POLAND:

Lab-JOT Ltd. Sp.z o.o. Sp.k.
Stacjonarny: +48 22 335 988 4
Komorkowy: +48 606 338 879
Fax: +48 22 335 981 9
bjuro@labjot.com
www.labjot.com

PORTUGAL:

Werfen
Tel: +351 214 247 312
Fax: +351 21 417 26 74
dac-pt@werfen.com
www.pt.werfen.com

ROMANIA:

ELTA 90 MEDICAL RESEARCH
SRL
Tel: +40 21 2322694
Fax: +40 21 2322696
office@elta90mr.ro
www.elta90mr.ro

RUSSIA:

SkyGen LLC
Tel: +7 495 215 02 22
info@skygen.com
www.skygen.com

SERBIA:

ALFA GENETICS D.O.O.
Tel: 00381 11 3291219
Fax: 00381 11 2761281
office@alfagenetics.rs
www.alfagenetics.rs

SPAIN:

Werfen
Tel: +34 902 20 30 90
Fax: +34 902 22 33 66
customerservice-es@werfen.com
www.es.werfen.com

SLOVAK REPUBLIC

BioTech s.r.o.
Tel: +421 2 54 77 44 88
Fax: +421 2 32 20 10 48
info@ibiotech.sk
www.ibiotech.sk

SLOVENIA:

Mikro+Polo d.o.o.
Tel: +386 2 614 33 00
Fax: +386 2 614 33 20
info@mikro-polo.si
www.mikro-polo.com

SOUTH AFRICA: INQABA BIOTEC

Tel: +27 123 43 58 29
Fax: +27 86 677 8409
info@inqababiotec.co.za
www.inqababiotec.co.za

SWEDEN, ESTONIA, LATVIA, LITHUANIA:

BIONORDIKA SWEDEN AB
Tel: +46 8 30 60 10
Fax: +46 8 30 60 15
info@bionordika.se
www.bionordika.se

SWITZERLAND:

BIOCONCEPT
Tel: +41 (0)61 486 80 80
Fax: +41 (0)61 486 80 00
info@bioconcept.ch
www.bioconcept.ch

TURKEY:

EKA BIOLAB TEKNOLOJİ
Tel: +90/312 248 13 24
Email: info@ekabiolab.com
www.ekabiolab.com

HEADQUARTERS

USA

New England Biolabs, Inc.
Telephone: (978) 927-5054

Toll Free (USA Orders): 1-800-632-5227

Toll Free (USA Tech): 1-800-632-7799

Fax: (978) 921-1350

info@neb.com

www.neb.com

www.neb.com

For a complete list of all NEB distributors, please go to

www.neb.com



Time for change – try Monarch for free.

For a limited time, try one of our Monarch Nucleic Acid Purification Kits by visiting NEBMonarch.com.

One or more of these products are covered by patents, trademarks and/or copyrights owned or controlled by New England Biolabs, Inc. For more information, please email us at gbd@neb.com. The use of these products may require you to obtain additional third party intellectual property rights for certain applications.

Your purchase, acceptance, and/or payment of and for NEB's products is pursuant to NEB's Terms of Sale. NEB does not agree to and is not bound by any other terms or conditions, unless those terms and conditions have been expressly agreed to in writing by a duly authorized officer of NEB.

AGILENT® and BIOANALYZER® are registered trademarks of Agilent Technologies, Inc. MISEQ® and ILLUMINA® are registered trademarks of Illumina, Inc. TRIZOL® is a registered trademark of Invitrogen. SYBR® is a registered trademark of Thermo Fisher Scientific. MEGACLEAR™ and NANODROP™ are trademarks of Thermo Fisher Scientific. QIAGEN®, DNEASY®, RNEASY®, QIAPREP®, QIAQUICK® and MINELUTE® are registered trademarks of Qiagen GmbH. TRINEAN® is a registered trademark of Trinean NV. DROPSENSE™ is a trademark of Trinean NV. BIORAD® is a registered trademark of BioRad Laboratories. RNALATER® is a registered trademark of Sigma Aldrich.

© Copyright 2019, New England Biolabs, Inc.; all rights reserved.

